

## GENERAL NOTES

\*SEAL ALL TYVEK® JOINTS OR PENETRATIONS WITH APPROVED TAPE.

(ex. DUPONT™ CONTRACTOR TAPE)

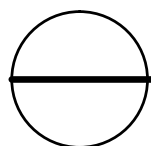
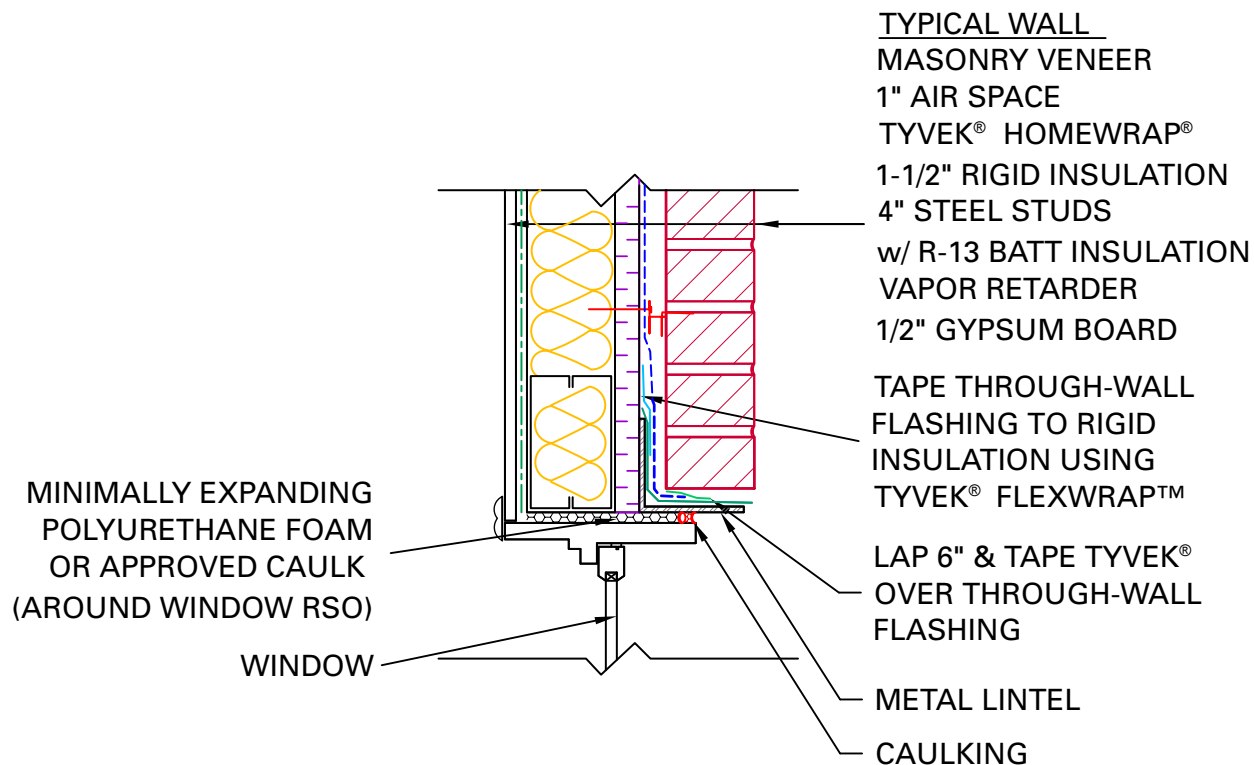
\*FASTEN TYVEK® AND RIGID INSULATION TO STEEL STUDS

USING SCREWS W/ WASHERS.(ex. DUPONT™ WRAPCAPS)

\* SEAL OR GASKET BRICK TIES AT THE FACE OF TYVEK®

\*LOCAL LAWS, ZONING, AND BUILDING CODES VARY AND

THEREFORE GOVERNS OVER MATERIAL SELECTION AND DETAILING SHOWN BELOW.



## WINDOW HEAD DETAIL

RESIDENTIAL STEEL FRAME STRUCTURE w/ MASONRY VENEER

(HEATING CLIMATE)