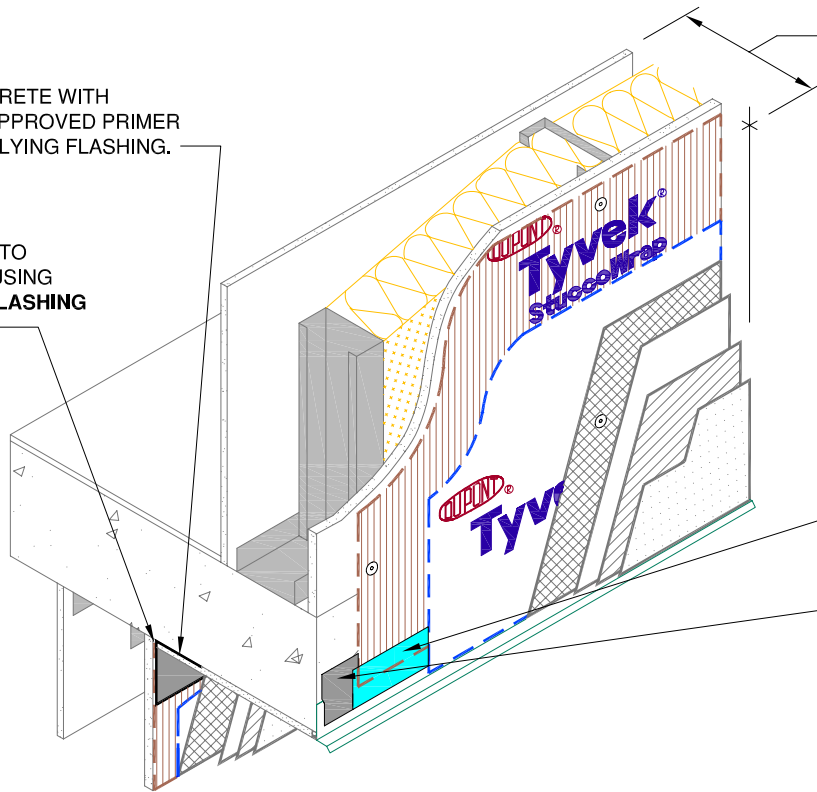


PRIME CONCRETE WITH  
DUPONT™ APPROVED PRIMER  
BEFORE APPLYING FLASHING.

SEAL TYVEK TO  
CONCRETE USING  
DUPONT™ FLASHING  
PRODUCTS



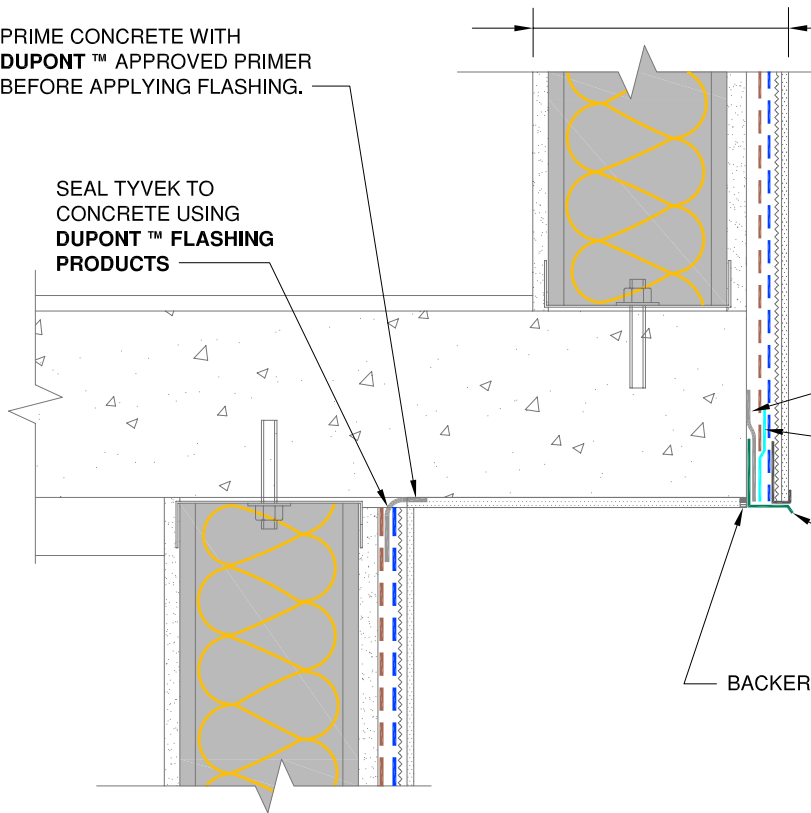
TYPICAL WALL  
INTERIOR GYPSUM BOARD  
STEEL STUDS W/BATT INSULATION  
EXTERIOR GYPSUM BOARD  
DUPONT™ TYVEK® STUCCOWRAP®  
DUPONT™ TYVEK®  
WIRE LATH  
SCRATCH COAT  
BROWN COAT  
FINISH COAT

SEAL BOTTOM USING  
3" DUPONT™ TYVEK® TAPE

DUPONT™ FLASHING PRODUCTS  
IF NECESSARY PRIME SUBSTRATE  
BEFORE APPLYING FLASHING

PRIME CONCRETE WITH  
DUPONT™ APPROVED PRIMER  
BEFORE APPLYING FLASHING.

SEAL TYVEK TO  
CONCRETE USING  
DUPONT™ FLASHING  
PRODUCTS



TYPICAL WALL  
INTERIOR GYPSUM BOARD  
STEEL STUDS W/BATT INSULATION  
EXTERIOR GYPSUM BOARD  
DUPONT™ TYVEK® STUCCOWRAP®  
DUPONT™ TYVEK®  
WIRE LATH  
SCRATCH COAT  
BROWN COAT  
FINISH COAT

DUPONT™ FLASHING PRODUCTS  
IF NECESSARY PRIME SUBSTRATE  
BEFORE APPLYING FLASHING

SEAL BOTTOM USING  
3" DUPONT™ TYVEK® TAPE

DRIP EDGE

BACKER ROD & SEALANT JOINT

## STUCCO - CANTILEVERED FLOOR

- SEAL ALL DUPONT™ TYVEK® SEAMS AND REPAIR MINOR HOLES WITH DUPONT™ TYVEK® TAPE.
- FASTEN DUPONT™ TYVEK® WITH APPROVED FASTENERS AND SPACING.
- INTERIOR VAPOR RETARDER MAY BE REQUIRED IN SOME REGIONS.
- LOCAL LAWS, ZONING, AND BUILDING CODES VARY AND THEREFORE GOVERN OVER MATERIAL SELECTION AND DETAILING SHOWN ABOVE.



Tyvek.