



Tyvek.

TYVEK[®] PROTEC[™] I20 ROOFING UNDERLAYMENT



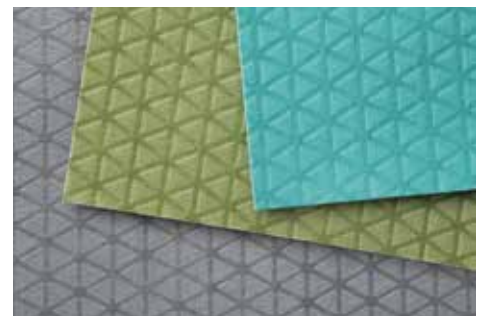
INDUSTRY-LEADING WALKABILITY

The unique embossed pattern allows for better traction and grip while walking on the roof.



TRUSTED QUALITY AND DURABILITY

Another innovative material breakthrough from DuPont[™] Tyvek[®], the leader in building envelope systems.



A FAMILY OF UNDERLAYMENTS

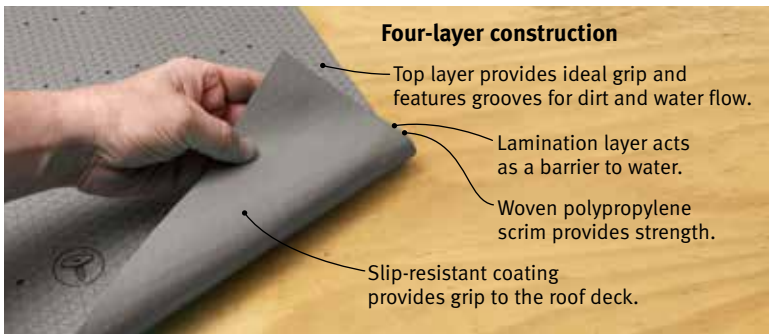
Our portfolio of roofing underlayments provides choices to better meet your needs.



Industry-leading walkability in dry, wet, hot, cold and dirty conditions.

Tyvek® Protec™ 120 is an engineered synthetic roofing underlayment with industry-leading walkability from DuPont, the trusted name in total building envelope solutions. Ideal for slopes 2:12 or higher under a variety of roofing materials in repair, re-roofing and new construction.

Tyvek® Protec™		
Walkability	Best in Class	
Roll Size (10 square)	48" x 250'	
Rolls Per Pallet	49	
Roll Weight	25 lbs	
Warranty	30 years	
UV Exposure	3 months	
Roof Types		
Asphalt Shingle	✓	
Cedar Shingle	✓	
Metal	✓	
Tile	Use Tyvek® Protec™ 160 or 200	
Slate	Use Tyvek® Protec™ 160 or 200	
Recyclable	✓	
ASTM D226 Types I & II	✓	
ICC-ES AC188	✓	
Class A Per ASTM E108	✓	



Easy to chalk
Accepts and holds chalk marks for more visible lines and a better finished product.



Wrinkle-free
Lays flat and stays flat for a more uniform shingled surface.



Protects the roof
Preserves the roof deck during installation and provides an effective secondary moisture barrier.



Supported by the DuPont™ Tyvek® Specialist Network
Specialists are available across the U.S. and Canada for additional knowledge and support.



tyvek.com/protec 1-800-44-TYVEK



FOR GREATER GOOD™

Industry-leading walkability when compared to other low permeability synthetic roofing underlayments.
Copyright © 2016 DuPont. All rights reserved. The DuPont Oval Logo, DuPont™, For Greater Good™, Tyvek™ and Tyvek® Protec™ are trademarks or registered trademarks of E.I. du Pont de Nemours and Company or its affiliates. K-29378 (07/16)