



The miracles of science™

POWERFUL DISEASE CONTROL FOR HIGH VALUE BERRIES.

DuPont™
Fontelis®
fungicide

Powerful new chemistry

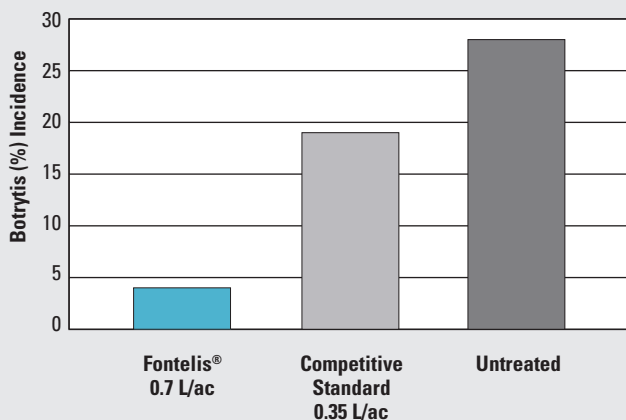
- Brand new active ingredient – penthiopyrad
- The next generation Group 7 fungicide
- Controls diseases resistant to other fungicide groups
- Powerful activity on important diseases

Balanced attributes gives you peace of mind

- Strong preventative and residual activity
- Excellent rainfastness
- Translaminar and locally systemic movement within treated tissues
- Redistribution to untreated foliage



Excellent Control of Botrytis Grey Mould in Strawberries



Source: DuPont USA (Dover, FL) 2010–2011.

Strawberry Botrytis Control – DuPont™ Fontelis® SC



Source: Ohio State, M. Ellis, 2008.

Flexible protection

- Convenient single-active formulation gives you the power to build an integrated disease control program
- Tank-mixable with protectant fungicides
- Application and harvest flexibility
- Optimized SC formulation is gentle on the crop

Application information

Packaging: One (1) case = 4 x 3.79 L jugs.

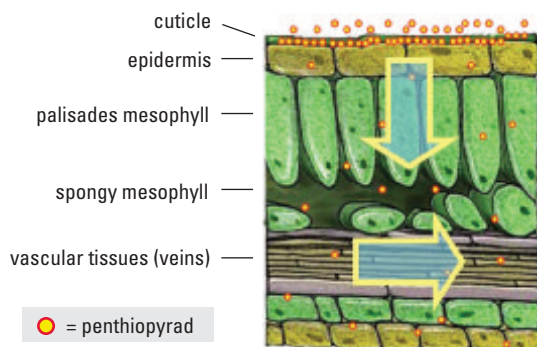
Minimum Water Volumes (ground): 110 L/ha = 10 gal/ac.

Crop	Diseases	Rate	PHI	REI	Application Specifications
BERRIES Bearberry, Bilberry, Cloudberry, Cranberry, Lingonberry, Partridgeberry, Strawberry	Botrytis grey mould	0.4 to 0.7 L/ac (1 to 1.75 L/ha)	0 days	12 hours	Begin applications prior to disease development and continue on a 7 to 10 day interval. Use higher rate and shorter interval when disease pressure is high. Do not apply by air.
Low bush blueberries	Mummy berry (suppression)	0.7 L/ac (1.75 L/ha)			Begin applications prior to disease development and continue on a 7 to 14 day interval. Use higher rate and shorter interval when disease pressure is high. May be applied by air.

Fontelis® is also registered on:

Alfalfa, bulb vegetables (green, dry), brassica (cole) leafy vegetables, carrots, cucurbit vegetables, fruiting vegetables, leafy vegetables, legume vegetables, pome fruits, root vegetables and leaves, stone fruit, tree nuts and peanuts.

Power Difference — DuPont™ Fontelis® Excellent Plant Movement



About 15% remains on leaf surface

- **Preventive** and **residual** disease control
- Dislodgeable by rainfall or irrigation for **redistribution** within plant canopy and along stems

About 80% is associated with the waxy cuticle

- Primary source of product for **preventive** disease control
- Reservoir of active ingredient for **rainfastness** and **extended residual**
- Reservoir for **uptake** into the interior of the leaf for post infection and **movement** through and within leaf

About 5% penetrates quickly into leaf

- Responsible for **post-infection** and **local xylem systemic movement**

Questions?

For more information, please contact your retailer, call your local DuPont rep or the DuPont™ FarmCare® Support Centre at 1-800-667-3925 or visit fontelis.dupont.ca



As with all crop protection products, read and follow label instructions carefully. All information effective August 2014.

The DuPont Oval Logo, DuPont™, The miracles of science™, FarmCare® and Fontelis® are registered trademarks or trademarks of E. I. du Pont de Nemours and Company. E. I. du Pont Canada Company is a licensee. Member of CropLife Canada.

© Copyright 2014 E. I. du Pont Canada Company. All rights reserved.