



POWERFUL DISEASE CONTROL FOR YOUR VEGETABLE CROPS.

DuPont™
Fontelis®
fungicide

Powerful new chemistry

- Brand new active ingredient – penthiopyrad
- The next generation Group 7 fungicide
- Powerful activity on important diseases

Balanced attributes gives you peace of mind

- Strong preventative and residual activity
- Excellent rainfastness
- Translaminar and locally systemic movement within treated tissues
- Redistribution to untreated foliage

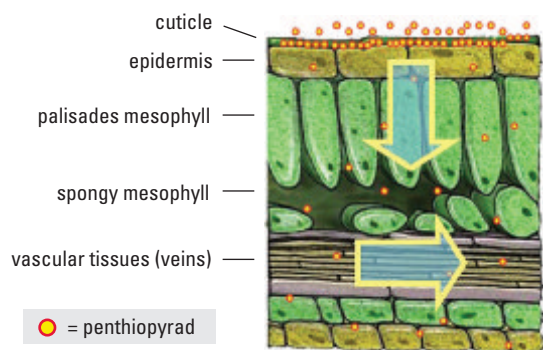
What does grey mould look like?



Grey mould (*Botrytis cinerea*)

Source: APS Press

Power Difference — DuPont™ Fontelis® Excellent Plant Movement



About 15% remains on leaf surface

- **Preventive** and **residual** disease control
- Dislodgeable by rainfall or irrigation for **redistribution** within plant canopy and along stems

About 80% is associated with the waxy cuticle

- Primary source of product for **preventive** disease control
- Reservoir of active ingredient for **rainfastness** and **extended residual**
- Reservoir for **uptake** into the interior of the leaf for post infection and **movement** through and within leaf

About 5% penetrates quickly into leaf

- Responsible for **post-infection** and **local xylem systemic movement**

What does lettuce drop look like?



S. sclerotiorum

Source: Washington State University.



S. minor in crisphead lettuce

Source: APS Press

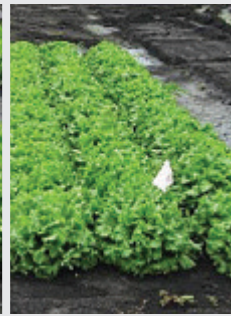
Control of lettuce drop caused by *Sclerotinia minor*



Untreated control



Center row inoculated



Fontelis® SC

DuPont Crop Protection, U. S. Field Development trial in Michigan, 2008.

Flexible protection

- Convenient single-active formulation gives you the power to build an integrated disease control program
- Tank-mixable with protectant fungicides
- Application and harvest flexibility
- Optimized SC formulation is gentle on the crop

Application information

Packaging: One (1) case = 4 x 3.79 L jugs.

Minimum Water Volumes (ground): 110 L/ha = 10 gal/ac.



Crop	Diseases	Rate	PHI	REI	Application Specifications
BRASSICA	Grey mould	0.5 to 0.9 L/ac (1.25 to 2.25 L/ha)	0 days	12 hours	Begin applications prior to disease development and continue on a 7 to 14 day interval. Use higher rate and shorter interval when disease pressure is high. Do not apply by air.
	Sclerotinia stem rot (suppression)	0.5 to 0.7 L/ac (1.25 to 1.75 L/ha)			
LEAFY	Grey mould Lettuce drop (suppression)	0.5 to 0.7 L/ac (1.25 to 1.75 L/ha)	3 days		Begin applications prior to disease development and continue on a 7 to 10 day interval. Use higher rate and shorter interval when disease pressure is high. Do not apply by air.

Fontelis® is also registered on:

Alfalfa, low growing berries, bulb vegetables (green, dry), carrots, cucurbit vegetables, fruiting vegetables, leafy vegetables, legume vegetables, pome fruits, root vegetables and leaves, stone fruit, tree nuts and peanuts.

Questions?

For more information, please contact your retailer, call your local DuPont rep or the DuPont™ FarmCare® Support Centre at 1-800-667-3925 or visit fontelis.dupont.ca



As with all crop protection products, read and follow label instructions carefully. All information effective August 2014.

The DuPont Oval Logo, DuPont™, The miracles of science™, FarmCare® and Fontelis® are registered trademarks or trademarks of E. I. du Pont de Nemours and Company. E. I. du Pont Canada Company is a licensee. Member of CropLife Canada.

© Copyright 2014 E. I. du Pont Canada Company. All rights reserved.