



# POWERFUL DISEASE CONTROL FOR YOUR HIGH VALUE STONE FRUIT CROPS.

**DuPont™  
Fontelis®**  
fungicide

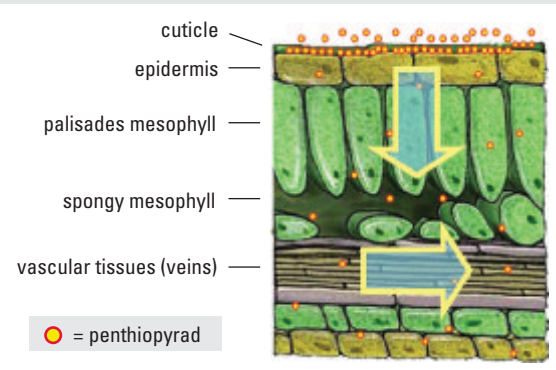
## Powerful new chemistry

- Brand new active ingredient – penthiopyrad
- The next generation Group 7 fungicide
- Powerful activity on important diseases
- Controls diseases resistant to other fungicide groups

## Balanced attributes gives you peace of mind

- Strong preventative and residual activity
- Excellent rainfastness
- Translaminar and locally systemic movement within treated tissues
- Redistribution to untreated foliage

### Power Difference — DuPont™ Fontelis® Excellent Plant Movement



#### About 15% remains on leaf surface

- **Preventive** and **residual** disease control
- Dislodgeable by rainfall or irrigation for **redistribution** within plant canopy and along stems

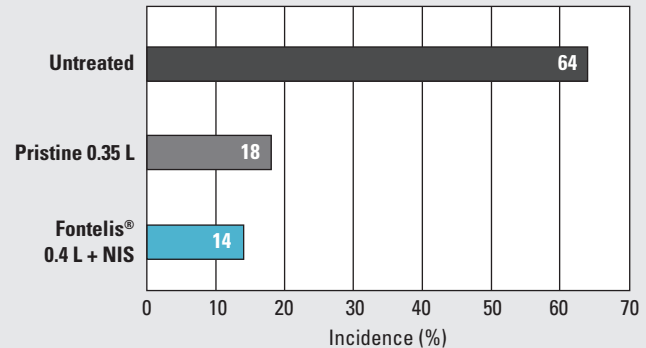
#### About 80% is associated with the waxy cuticle

- Primary source of product for **preventive** disease control
- Reservoir of active ingredient for **rainfastness** and **extended residual**
- Reservoir for **uptake** into the interior of the leaf for post infection and **movement** through and within leaf

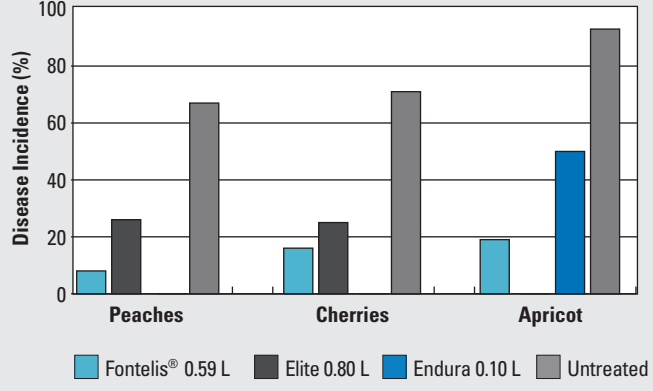
#### About 5% penetrates quickly into leaf

- Responsible for **post-infection** and **local xylem systemic movement**

### Fontelis® is more effective on brown rot in cherries



### Fontelis® provides excellent control of brown rot in stone fruit



Source: DuPont USA (Michigan) 2011.

## Flexible protection

- Convenient single-active formulation gives you the power to build an integrated disease control program
- Tank-mixable with protectant fungicides
- Application and harvest flexibility
- Optimized SC formulation is gentle on the crop

## Application information

**Packaging:** One (1) case = 4 x 3.79 L jugs.

**Minimum Water Volumes (ground):** 110 L/ha = 10 gal/ac.



Crop	Diseases	Rate	PHI	REI	Application Specifications
STONE FRUITS Apricot, Cherry (sweet, tart), Nectarine, Peach, Plum, Plum (Chickasaw), Plum (Damson), Plum (Japanese), Plumcot, Prune (fresh)	Brown rot blossom blight and fruit rot Powdery mildew	0.4 to 0.7 L/ac (1 to 1.75 L/ha)	0 days	12 hours	Begin applications prior to disease development and continue on a 7 to 14 day interval. Use higher rate and shorter interval when disease pressure is high.  Do not apply by air.
	Scab	0.4 to 0.6 L/ac (1 to 1.5 L/ha)			
	Botrytis rots	0.5 to 0.7 L/ac (1.25 to 1.75 L/ha)			
	Cherry leafspot (suppression)	0.6 L/ac (1.5 L/ha)			

## Fontelis® is also registered on:

Alfalfa, low growing berries, bulb vegetables (green, dry), brassica (cole) leafy vegetables, carrots, cucurbit vegetables, fruiting vegetables, leafy vegetables, legume vegetables, pome fruits, root vegetables and leaves, tree nuts and peanuts.

## Questions?

For more information, please contact your retailer, call your local DuPont rep or the DuPont™ FarmCare® Support Centre at 1-800-667-3925 or visit [fontelis.dupont.ca](http://fontelis.dupont.ca)



As with all crop protection products, read and follow label instructions carefully. All information effective December 2013.

The DuPont Oval Logo, DuPont™, The miracles of science™, FarmCare® and Fontelis® are registered trademarks or trademarks of E. I. du Pont de Nemours and Company. E. I. du Pont Canada Company is a licensee. Member of CropLife Canada.

All other products are registered trademarks of their respective companies.

© Copyright 2014 E. I. du Pont Canada Company. All rights reserved.