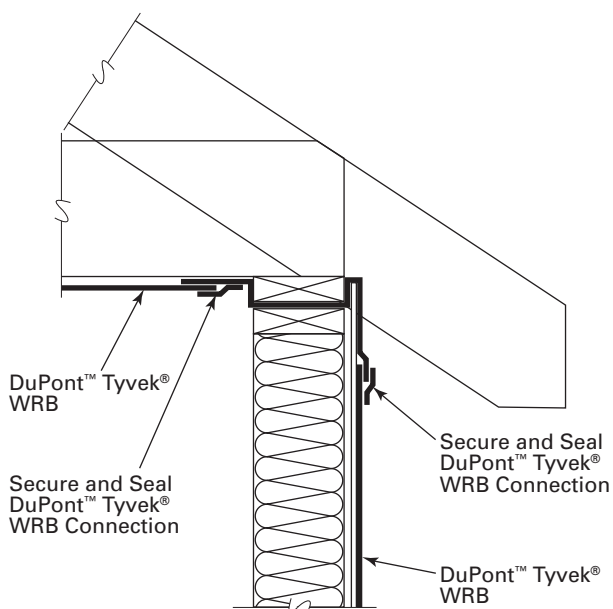


DUPONT™ TYVEK® WEATHERIZATION SYSTEMS

AIR BARRIER INSTALLATION DETAIL: TOP AND BOTTOM OF WALL INTERFACE – METHODS 1 & 2

This installation bulletin is intended for use when installing DuPont™ Tyvek® WRBs at the top and bottom of wall interfaces and should be used with the DuPont™ Tyvek® Water-Resistive and Air Barriers Installation Guidelines For

TOP OF WALL INTERFACE – METHOD 1

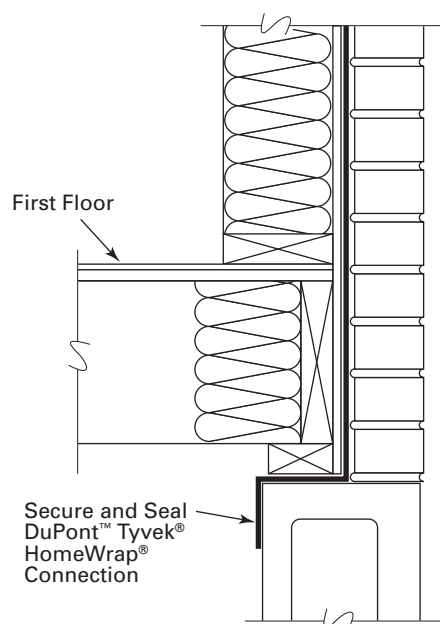


To ensure continuity of the air barrier membrane from the top of the wall to the interior, install the DuPont™ Tyvek® WRB as shown above.

1. Install the DuPont™ Tyvek® WRB onto the face of the wall according to the DuPont™ Tyvek® Water-Resistive and Air Barriers Installation Guidelines For Buildings Less Than 5 Stories and Low-Rise Multi-Family Residential Buildings Less Than 6 Stories.
2. Install the last course of the DuPont™ Tyvek® WRB as shown above so it extends beyond framing into interior of wall with adequate length so it can be overlapped by layer of DuPont™ Tyvek® WRB at ceiling.
3. Seal all horizontal seams with DuPont™ Tyvek® Tape.

Buildings Less Than 5 Stories and Low-Rise Multi-Family Residential Buildings Less Than 6 Stories. All installation requirements, including air barrier specific requirements from the Installation Guidelines must be followed

BOTTOM OF WALL INTERFACE – METHOD 1



To ensure continuity of the air barrier membrane from the bottom of the wall into the interior, install the DuPont™ Tyvek® WRB as shown above.

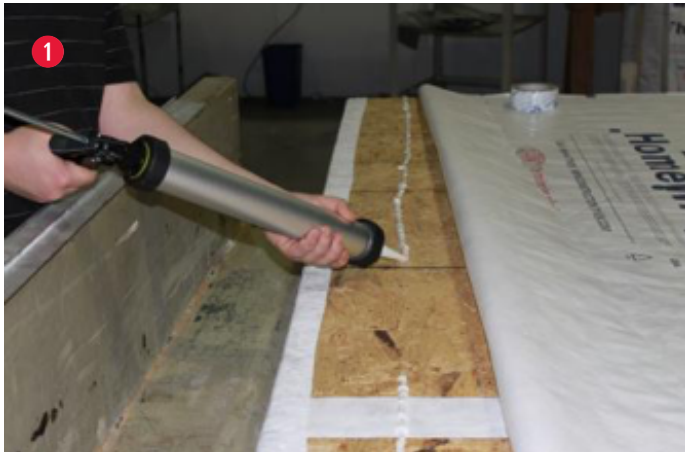
1. Install starter course of the DuPont™ Tyvek® WRB so it extends into the interior and onto the vertical face of the foundation.
2. After installation of wall framing and sheathing, fasten the DuPont™ Tyvek® WRB onto the face of the wall according to the DuPont™ Tyvek® Air and Water-Resistive Barrier Installation Guidelines.
3. Seal the the DuPont™ Tyvek® WRB at the interior foundation using DuPont™ Residential Sealant (or recommended sealant), DuPont™ StraightFlash™, or DuPont™ Flashing Tape. When sealing directly to concrete, wood, or other rough surfaces using DuPont™ self-adhered membranes, use DuPont™ Adhesive/Primer (or recommended primer).



DUPONT™ TYVEK® WEATHERIZATION SYSTEMS AIR BARRIER INSTALLATION DETAILS

3. Continue installation of the DuPont™ Tyvek® WRB onto face of wall according to the DuPont™ Tyvek® Water-Resistive and Air Barriers Installation Guidelines For Buildings Less Than 5 Stories and Low-Rise Multi-Family Residential Buildings Less Than 6 Stories.
5. Seal all horizontal seams with DuPont™ Tyvek® Tape.

AIR BARRIER INSTALLATION DETAIL: TOP AND BOTTOM OF WALL INTERFACE – METHOD 2



1. Apply DuPont™ Residential Sealant, or recommended sealant, along the top/bottom of the wall approximately 2 to 3" from the edge. Press the DuPont™ Tyvek® WRB into the sealant using firm hand pressure or a J-roller. This will temporarily hold the Tyvek® WRB in place in prior to step 2.



2. Fasten the DuPont™ Tyvek® WRB to the studs as instructed in *the DuPont™ Tyvek® Water-Resistive and Air Barriers Installation Guidelines For Buildings Less Than 5 Stories and Low-Rise Multi-Family Residential Buildings Less Than 6 Stories*.

KEY CONSIDERATIONS

- Use > 1/4 inch bead of DuPont™ Residential Sealant.
- Use J-Roller or firm hand pressure over sealant interface to improve bond between DuPont™ Tyvek® WRB and wood framing.
- Check with sealant manufacturer to ensure compatibility with both substrate and DuPont™ Tyvek® WRB.
- Follow DuPont™ Tyvek® Water-Resistive and Air Barriers Installation Guidelines *For Buildings Less Than 5 Stories and Low-Rise Multi-Family Residential Buildings Less Than 6 Stories*, including, but not limited to:
 - Proper overlap of the DuPont™ Tyvek® WRB.
 - Proper installation and spacing of fasteners.
 - Proper sealing of all DuPont™ Tyvek® WRB seams using DuPont™ Tyvek® Tape. Use 3" DuPont™ Tyvek® Tape for both vertical and horizontal seams of DuPont™ Tyvek® StuccoWrap® and DuPont™ Tyvek® DrainWrap™.
 - Repair any areas of damage to the DuPont™ Tyvek® WRB.
 - Proper sealing of all penetrations made to the DuPont™ Tyvek® WRB.