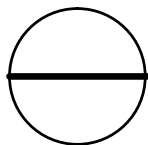
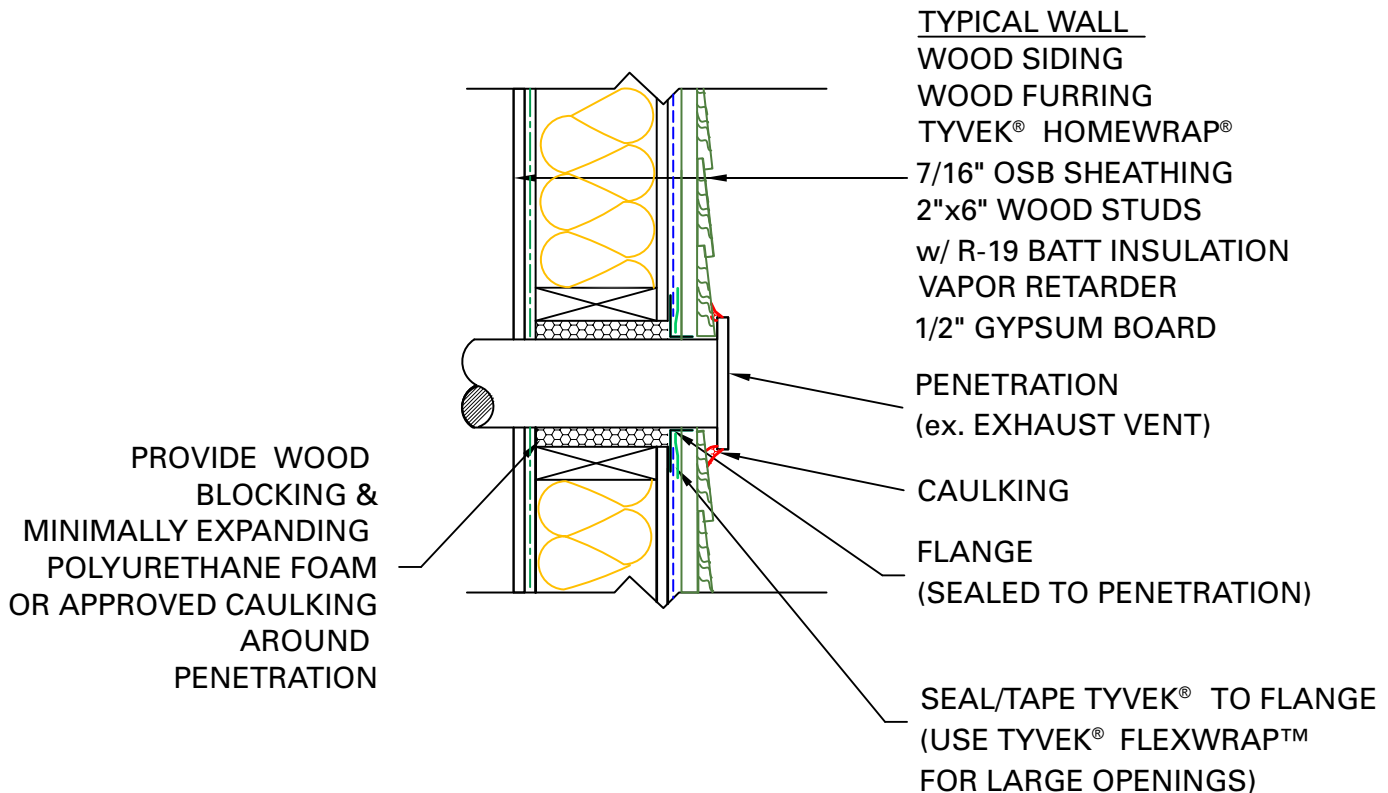


GENERAL NOTES

- *SEAL ALL TYVEK® JOINTS AND PENETRATIONS WITH APPROVED TAPE.
(ex. DUPONT™ CONTRACTOR TAPE).
- *FASTEN TYVEK® TO SHEATHING WITH LARGE HEAD NAILS
- OR USE NAILS WITH LARGE PLASTIC WASHER HEADS.(ex. DUPONT™ WRAPCAPS)
- *LOCAL LAWS, ZONING, AND BUILDING CODES VARY AND THEREFORE GOVERNS OVER MATERIAL SELECTION AND DETAILING SHOWN BELOW.



WALL PENETRATION DETAIL

RESIDENTIAL WOOD FRAME STRUCTURE w/ WOOD SIDING

(HEATING CLIMATE)