

## GENERAL NOTES

\*SEAL ALL TYVEK® JOINTS AND PENETRATIONS WITH APPROVED TAPE.

(ex. DUPONT™ CONTRACTOR TAPE).

\*FASTEN TYVEK® TO SHEATHING WITH LARGE HEAD NAILS

OR USE NAILS WITH LARGE PLASTIC WASHER HEADS.(ex. DUPONT™ WRAPCAPS)

\*LOCAL LAWS, ZONING, AND BUILDING CODES VARY AND

THEREFORE GOVERNS OVER MATERIAL SELECTION AND DETAILING SHOWN BELOW.

### CANTILEVERED FLOOR

METAL SOFFIT

TYVEK® HOMEWRAP®

7/16" OSB SHEATHING

WOOD JOISTS

w/R28 BATT INSULATION (MINIMUM)

5/8" TONGUE & GROOVE

PLYWOOD SUB-FLOOR

### TYPICAL WALL

VINYL SIDING

TYVEK® HOMEWRAP®

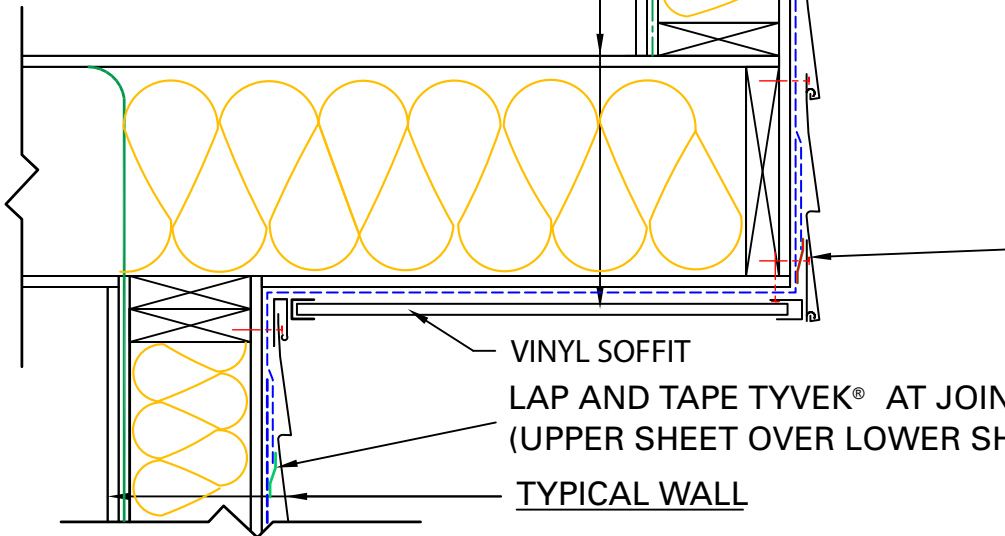
7/16" OSB SHEATHING

2"x6" WOOD STUDS

w/ R-19 BATT INSULATION

VAPOR RETARDER

1/2" GYPSUM BOARD

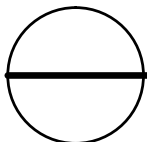


LAP & TAPE TYVEK® FROM WALL OVER TYVEK® FROM EXPOSED FLOOR. SECURE SIDING STARTER STRIP OVER JOINT.

VINYL SOFFIT

LAP AND TAPE TYVEK® AT JOINTS  
(UPPER SHEET OVER LOWER SHEET)

TYPICAL WALL



## CANTILEVERED FLOOR DETAIL

RESIDENTIAL WOOD FRAME STRUCTURE w/ VINYL SIDING

(HEATING CLIMATE)