

GENERAL NOTES

*SEAL ALL TYVEK® JOINTS AND PENETRATIONS WITH APPROVED TAPE.

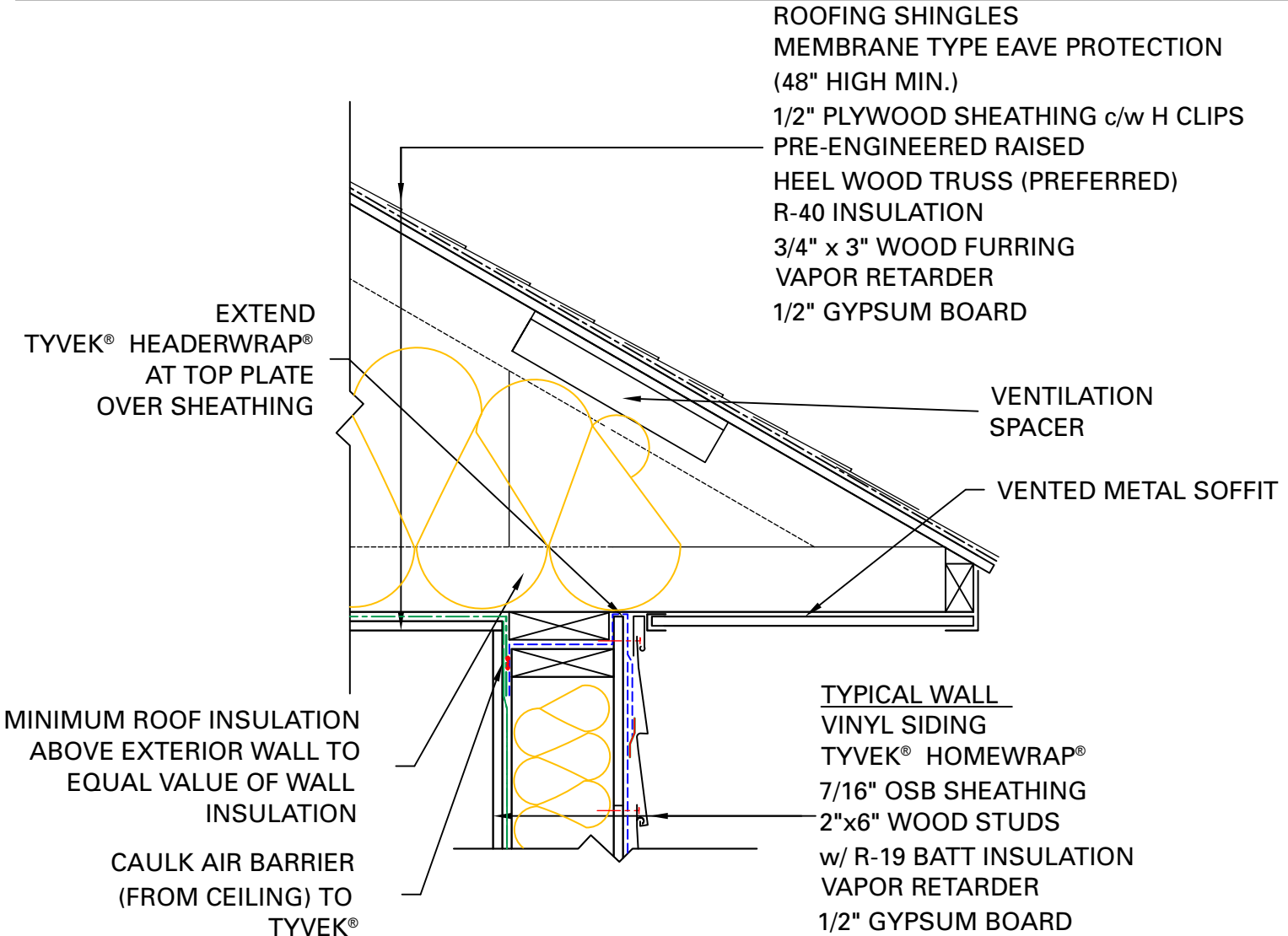
(ex. DUPONT™ CONTRACTOR TAPE).

*FASTEN TYVEK® TO SHEATHING WITH LARGE HEAD NAILS

OR USE NAILS WITH LARGE PLASTIC WASHER HEADS.(ex. DUPONT™ WRAPCAPS)

*LOCAL LAWS, ZONING, AND BUILDING CODES VARY AND

THEREFORE GOVERNS OVER MATERIAL SELECTION AND DETAILING SHOWN BELOW.



ROOFING SHINGLES
MEMBRANE TYPE EAVE PROTECTION
(48" HIGH MIN.)
1/2" PLYWOOD SHEATHING c/w H CLIPS
PRE-ENGINEERED RAISED
HEEL WOOD TRUSS (PREFERRED)
R-40 INSULATION
3/4" x 3" WOOD FURRING
VAPOR RETARDER
1/2" GYPSUM BOARD

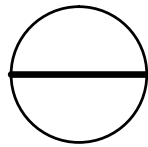
VENTILATION
SPACER
VENTED METAL SOFFIT

EXTEND
TYVEK® HEADERWRAP®
AT TOP PLATE
OVER SHEATHING

MINIMUM ROOF INSULATION
ABOVE EXTERIOR WALL TO
EQUAL VALUE OF WALL
INSULATION

CAULK AIR BARRIER
(FROM CEILING) TO
TYVEK®

TYPICAL WALL
VINYL SIDING
TYVEK® HOMEWRAP®
7/16" OSB SHEATHING
2"x6" WOOD STUDS
w/ R-19 BATT INSULATION
VAPOR RETARDER
1/2" GYPSUM BOARD



ROOF/ WALL INTERFACE DETAIL

RESIDENTIAL WOOD FRAME STRUCTURE w/ VINYL SIDING

(HEATING CLIMATE)