

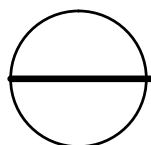
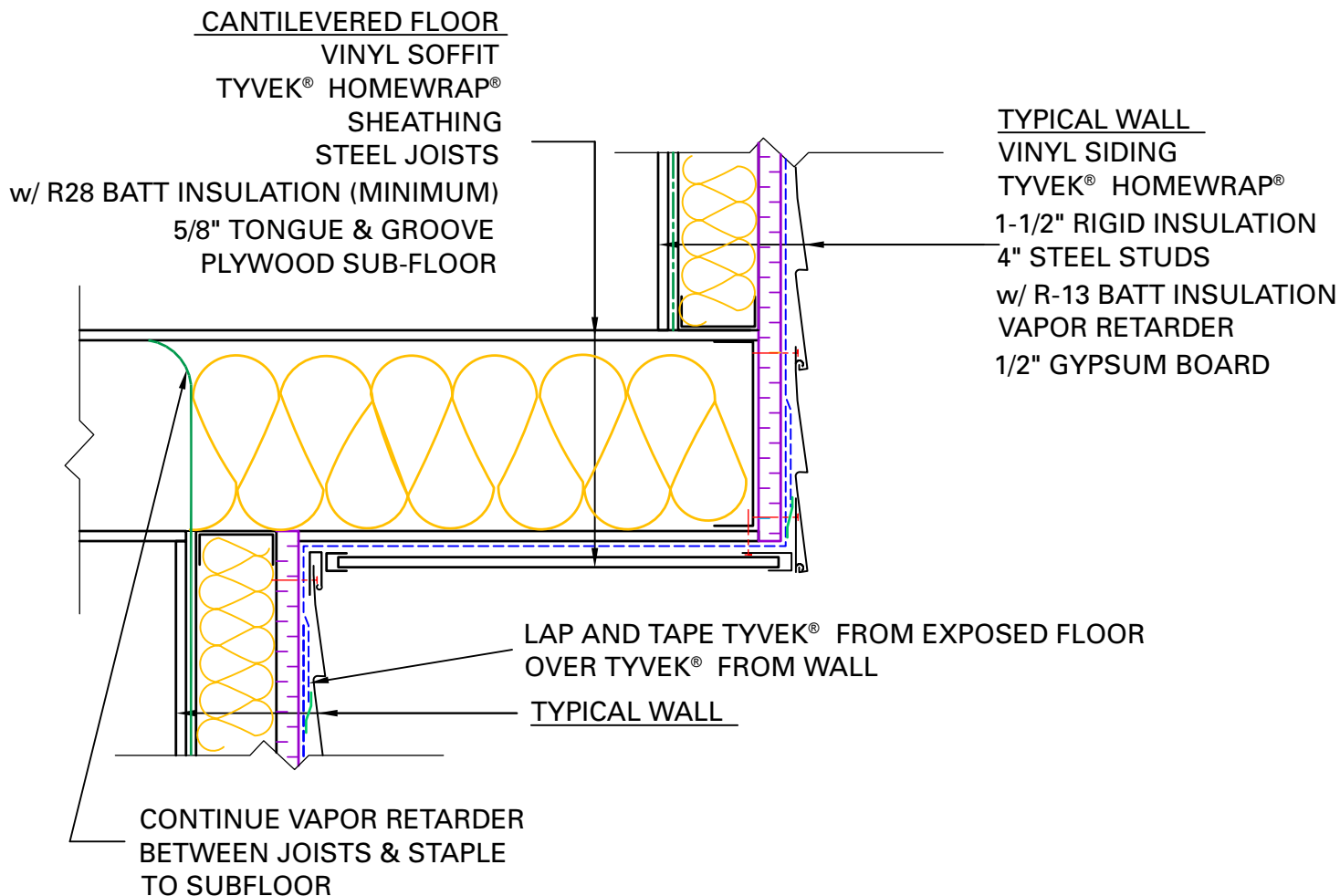
## GENERAL NOTES

\*SEAL ALL TYVEK® JOINTS OR PENETRATIONS WITH APPROVED TAPE.

(ex. DUPONT™ CONTRACTOR TAPE)

\*FASTEN TYVEK® AND RIGID INSULATION TO STEEL STUDS USING SCREWS W/ WASHERS. (ex. DUPONT™ WRAPCAPS)

\*LOCAL LAWS, ZONING, AND BUILDING CODES VARY AND THEREFORE GOVERNS OVER MATERIAL SELECTION AND DETAILING SHOWN BELOW.



## CANTILEVERED FLOOR DETAIL

RESIDENTIAL STEEL FRAME STRUCTURE w/ VINYL SIDING

(HEATING CLIMATE)