

GENERAL NOTES

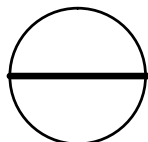
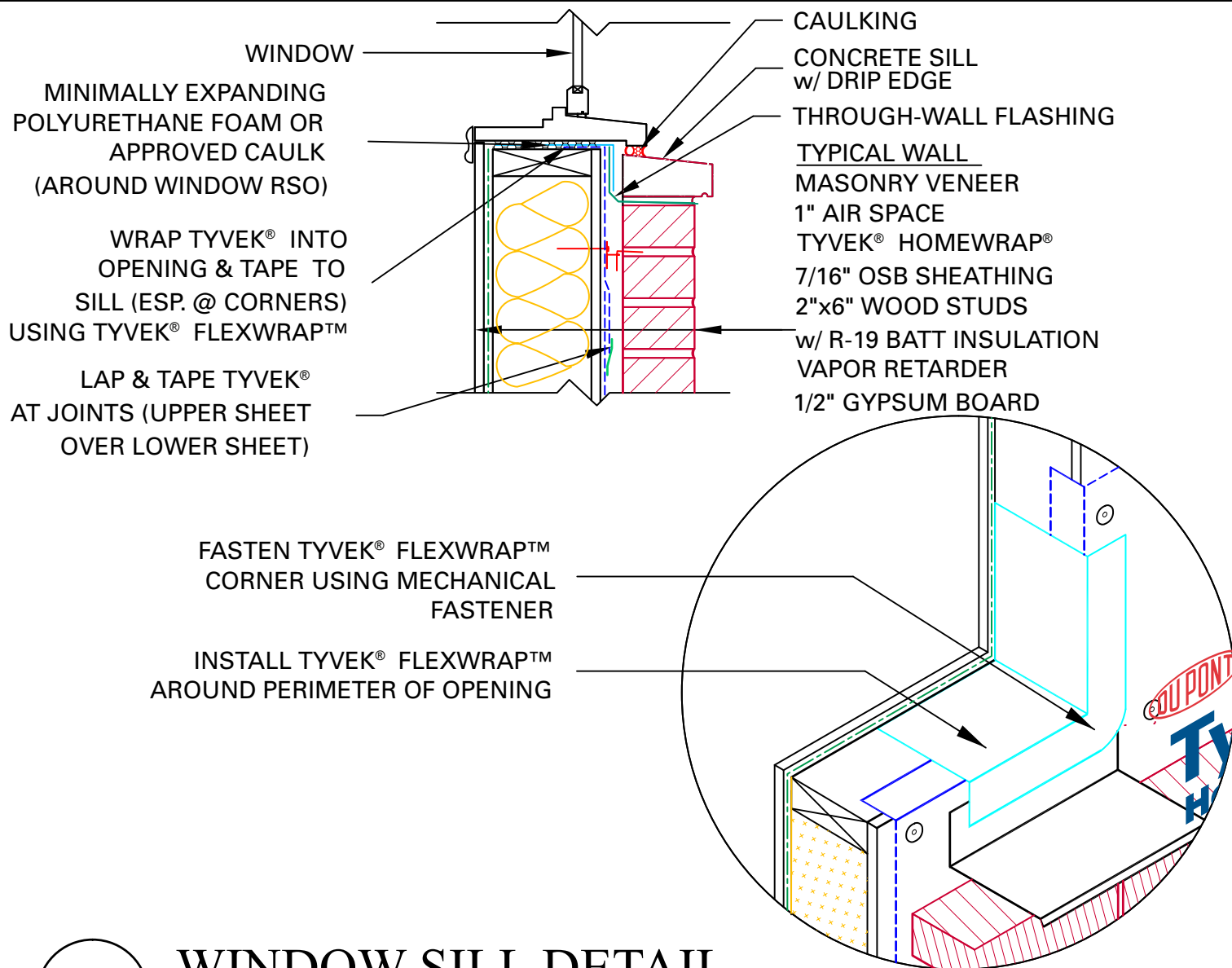
*SEAL ALL TYVEK® JOINTS AND PENETRATIONS WITH APPROVED TAPE. (ex. DUPONT™

CONTRACTOR TAPE)

*FASTEN TYVEK® TO SHEATHING WITH LARGE HEAD NAILS OR USE NAILS WITH LARGE PLASTIC WASHER HEADS. (ex. DUPONT™ WRAPCAPS)

*SEAL OR GASKET BRICK TIES AT THE FACE OF TYVEK®

*LOCAL LAWS, ZONING, AND BUILDING CODES VARY AND THEREFORE GOVERNS OVER MATERIAL SELECTION AND DETAILING SHOWN BELOW.



WINDOW SILL DETAIL

RESIDENTIAL WOOD FRAME STRUCTURE w/ MASONRY VENEER

(HEATING CLIMATE)