

TYPICAL WALL
 INTERIOR GYPSUM BOARD
 STEEL STUDS W/BATT INSULATION
 EXTERIOR GYPSUM BOARD
 MINERAL FIBER INSULATION (VAPOR PERMEABLE)
DUPONT™ TYVEK® COMMERCIALWRAP®
 AIR SPACE
 BRICK VENEER

BRICK TIE BASE PLATE WITH
DUPONT™ STRAIGHTFLASH™ PATCH

DUPONT™ THRU-WALL FLASHING
 WITH 1/4" DRIP EDGE

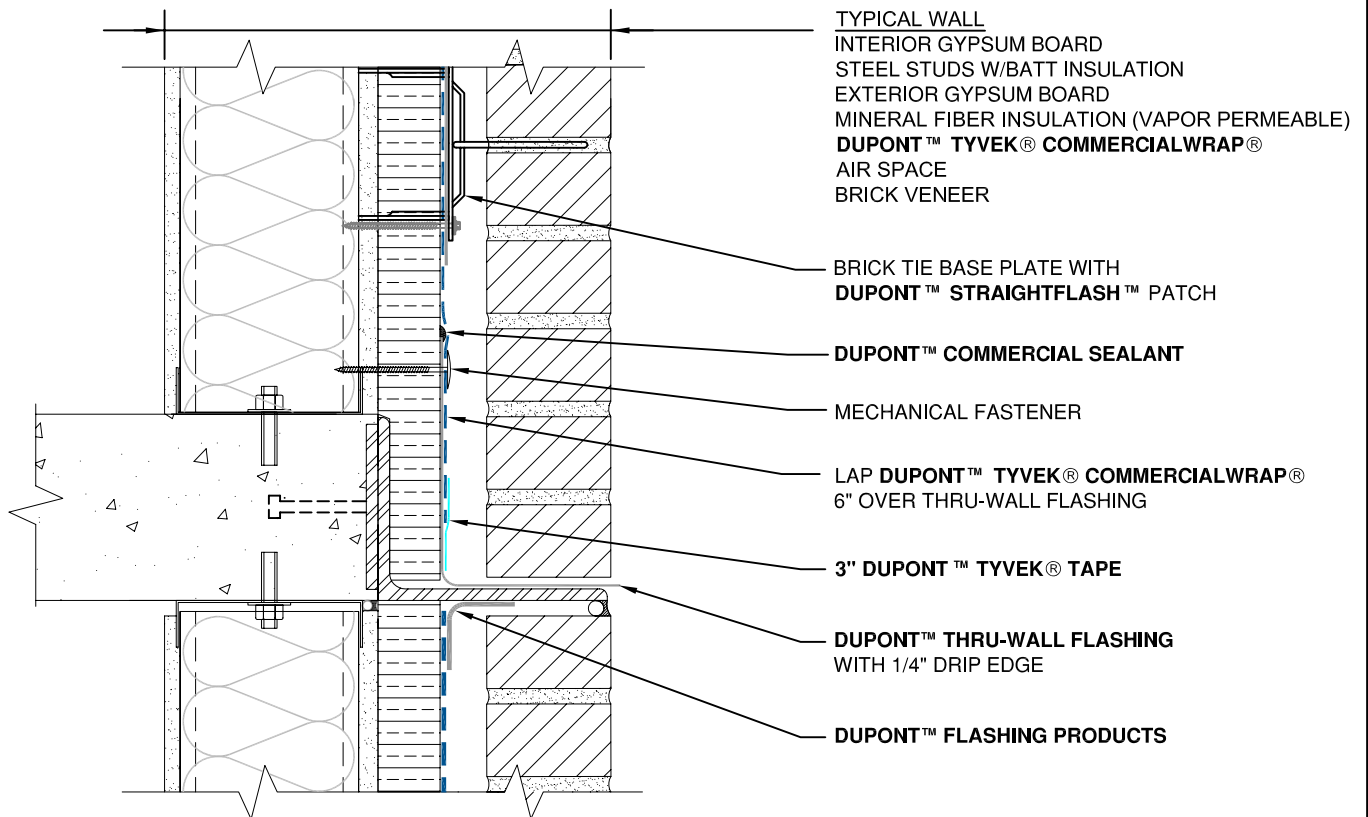
DUPONT™ COMMERCIAL SEALANT

MECHANICAL FASTENER

3" DUPONT™ TYVEK® TAPE

DUPONT™ FLASHING PRODUCTS

6" OVER
 THRU-WALL
 FLASHING



TYPICAL WALL
 INTERIOR GYPSUM BOARD
 STEEL STUDS W/BATT INSULATION
 EXTERIOR GYPSUM BOARD
 MINERAL FIBER INSULATION (VAPOR PERMEABLE)
DUPONT™ TYVEK® COMMERCIALWRAP®
 AIR SPACE
 BRICK VENEER

BRICK TIE BASE PLATE WITH
DUPONT™ STRAIGHTFLASH™ PATCH

DUPONT™ COMMERCIAL SEALANT

MECHANICAL FASTENER

LAP **DUPONT™ TYVEK® COMMERCIALWRAP®**
 6" OVER THRU-WALL FLASHING

3" DUPONT™ TYVEK® TAPE

DUPONT™ THRU-WALL FLASHING
 WITH 1/4" DRIP EDGE

DUPONT™ FLASHING PRODUCTS

- NOTE**
- 1) SEAL ALL DUPONT™ TYVEK® WEATHER BARRIER SEAMS AND REPAIR MINOR HOLES WITH DUPONT™ TYVEK® TAPE.
 - 2) FASTEN DUPONT™ TYVEK® WEATHER BARRIER WITH RECOMMENDED FASTENERS AND SPACING.
 - 3) INTERIOR VAPOR RETARDER MAY BE REQUIRED IN SOME REGIONS.
 - 4) THIS INFORMATION IS PROVIDED BY DUPONT AS REFERENCE ONLY; PLEASE CONSULT LOCAL BUILDING CODES, REGULATIONS AND LAWS TO DETERMINE THE APPROPRIATE CONSTRUCTION METHODS AND MATERIALS NEEDED.

SCALE: NOT TO SCALE

REVISION DATE: 11/17/10

DRAWING: CW-BXO-201

SHELF ANGLE DETAIL

BRICK VENEER / EXTERIOR INSULATION (WRAP OVER) / STEEL STUD WALL



Tyvek.