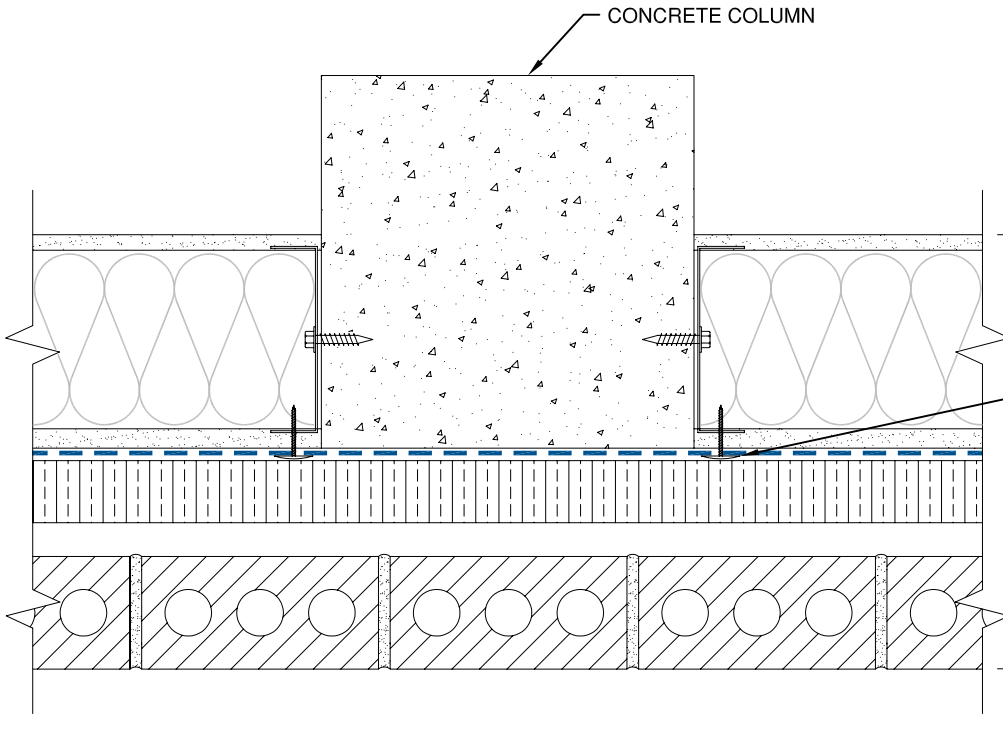


TYPICAL WALL  
 INTERIOR GYPSUM BOARD  
 STEEL STUDS W/BATT INSULATION  
 EXTERIOR GYPSUM BOARD  
**DUPONT™ TYVEK® COMMERCIALWRAP® D**  
 MINERAL FIBER INSULATION  
 (VAPOR PERMEABLE)  
 AIR SPACE  
 BRICK VENEER

MAINTAIN RECOMMENDED  
 FASTENER SPACING

BRICK TIE BASE PLATE WITH  
**DUPONT™ STRAIGHTFLASH™** PATCH

**NOTE:**  
 MECHANICALLY FASTEN **DUPONT™**  
**TYVEK® COMMERCIALWRAP® D** TO  
 CONCRETE COLUMN IF NECESSARY  
 TO MAINTAIN RECOMMENDED  
 FASTENER SPACING



CONCRETE COLUMN

TYPICAL WALL  
 INTERIOR GYPSUM BOARD  
 STEEL STUDS W/BATT INSULATION  
 EXTERIOR GYPSUM BOARD  
**DUPONT™ TYVEK® COMMERCIALWRAP® D**  
 MINERAL FIBER INSULATION  
 (VAPOR PERMEABLE)  
 AIR SPACE  
 BRICK VENEER

MAINTAIN RECOMMENDED  
 FASTENER SPACING

**NOTE:**  
 MECHANICALLY FASTEN **DUPONT™**  
**TYVEK® COMMERCIALWRAP® D** TO  
 CONCRETE COLUMN IF NECESSARY  
 TO MAINTAIN RECOMMENDED  
 FASTENER SPACING

- NOTE**
- 1) SEAL ALL DUPONT™ TYVEK® WEATHER BARRIER SEAMS AND REPAIR MINOR HOLES WITH DUPONT™ TYVEK® TAPE.
  - 2) FASTEN DUPONT™ TYVEK® WEATHER BARRIER WITH RECOMMENDED FASTENERS AND SPACING.
  - 3) INTERIOR VAPOR RETARDER MAY BE REQUIRED IN SOME REGIONS.
  - 4) THIS INFORMATION IS PROVIDED BY DUPONT AS REFERENCE ONLY; PLEASE CONSULT LOCAL BUILDING CODES, REGULATIONS AND LAWS TO DETERMINE THE APPROPRIATE CONSTRUCTION METHODS AND MATERIALS NEEDED.

SCALE: NOT TO SCALE  
 REVISION DATE: 11/17/10  
 DRAWING: CW-BXU-206

**CONCRETE COLUMN TRANSITION - METHOD 1**  
 BRICK VENEER / EXTERIOR INSULATION (WRAP UNDER) / STEEL STUD WALL

