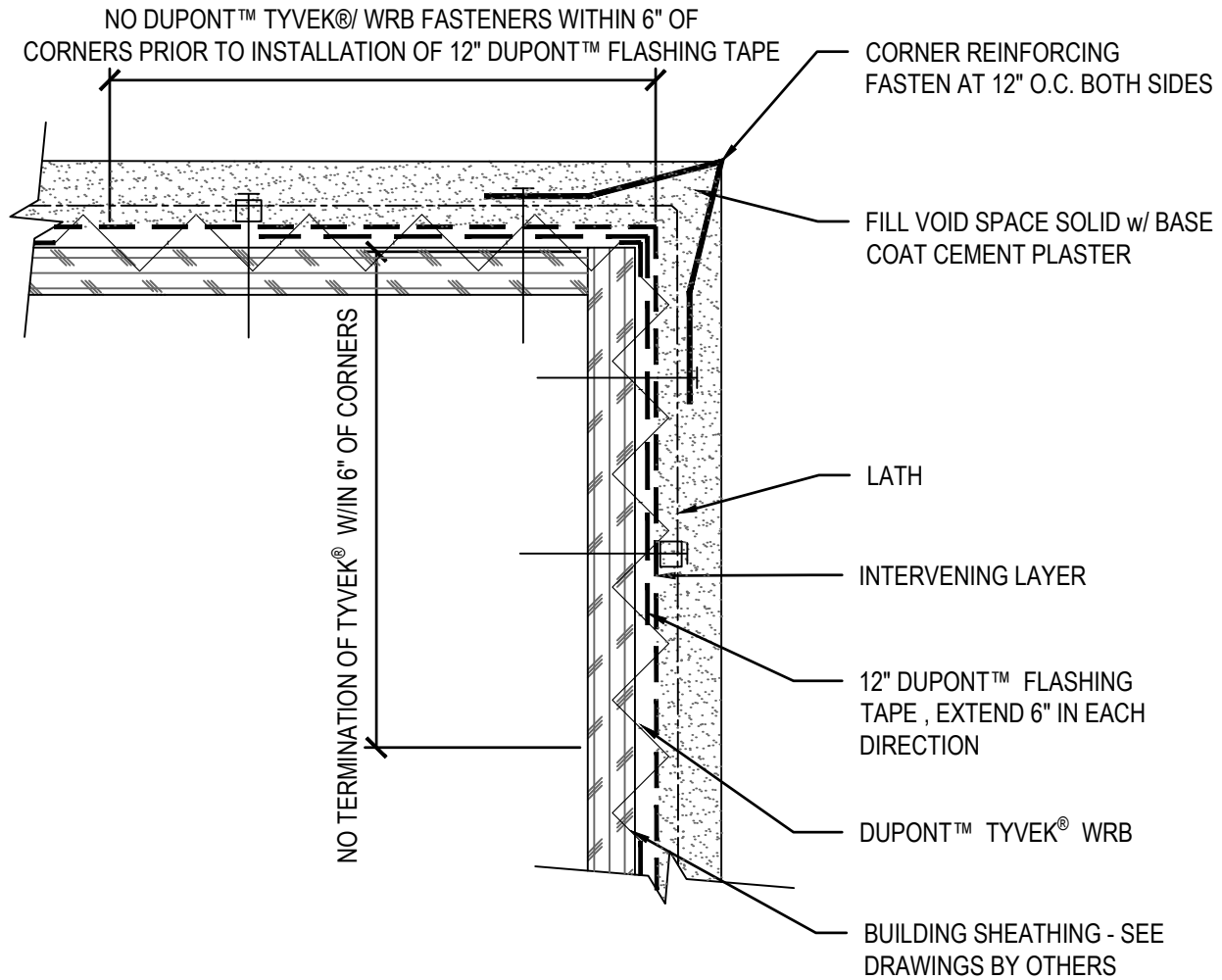


NO DUPONT™ TYVEK®/ WRB FASTENERS WITHIN 6" OF CORNERS PRIOR TO INSTALLATION OF 12" DUPONT™ FLASHING TAPE



CORNER REINFORCING FASTEN AT 12" O.C. BOTH SIDES

FILL VOID SPACE SOLID w/ BASE COAT CEMENT PLASTER

LATH

INTERVENING LAYER

12" DUPONT™ FLASHING TAPE , EXTEND 6" IN EACH DIRECTION

DUPONT™ TYVEK® WRB

BUILDING SHEATHING - SEE DRAWINGS BY OTHERS

NO TERMINATION OF TYVEK® W/IN 6" OF CORNERS

NOTES:

1. INTERVENING LAYER CAN BE SECOND LAYER OF DUPONT™ TYVEK® WRB, A LAYER OF GRADE D BUILDING PAPER, FELT, RIGID FOAM BOARD OR THE BACKING OF PAPER-BACKED LATH.
2. REPAIR MINOR HOLES WITH DUPONT™ TYVEK® TAPE.
3. FASTEN DUPONT™ TYVEK® WRB WITH APPROVED FASTENERS AND SPACING.
4. INTERIOR VAPOR RETARDER MAY BE REQUIRED IN SOME REGIONS.
5. LOCAL LAWS, ZONING, AND BUILDING CODES VARY AND THEREFORE GOVERN OVER MATERIAL SELECTION AND DETAILING SHOWN.
6. FOR ADDITIONAL INFORMATION REGARDING PRODUCT INSTALLATION, REFER TO THE APPLICABLE DUPONT™ INSTALLATION GUIDELINE.



SCALE: NOT TO SCALE  
 REVISION DATE: 11/1/16  
 DRAWING: R-CP-1302-MA

OUTSIDE CORNER  
 CEMENT PLASTER