

## GENERAL NOTES

\*SEAL ALL TYVEK® JOINTS OR PENETRATIONS WITH APPROVED TAPE.

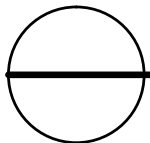
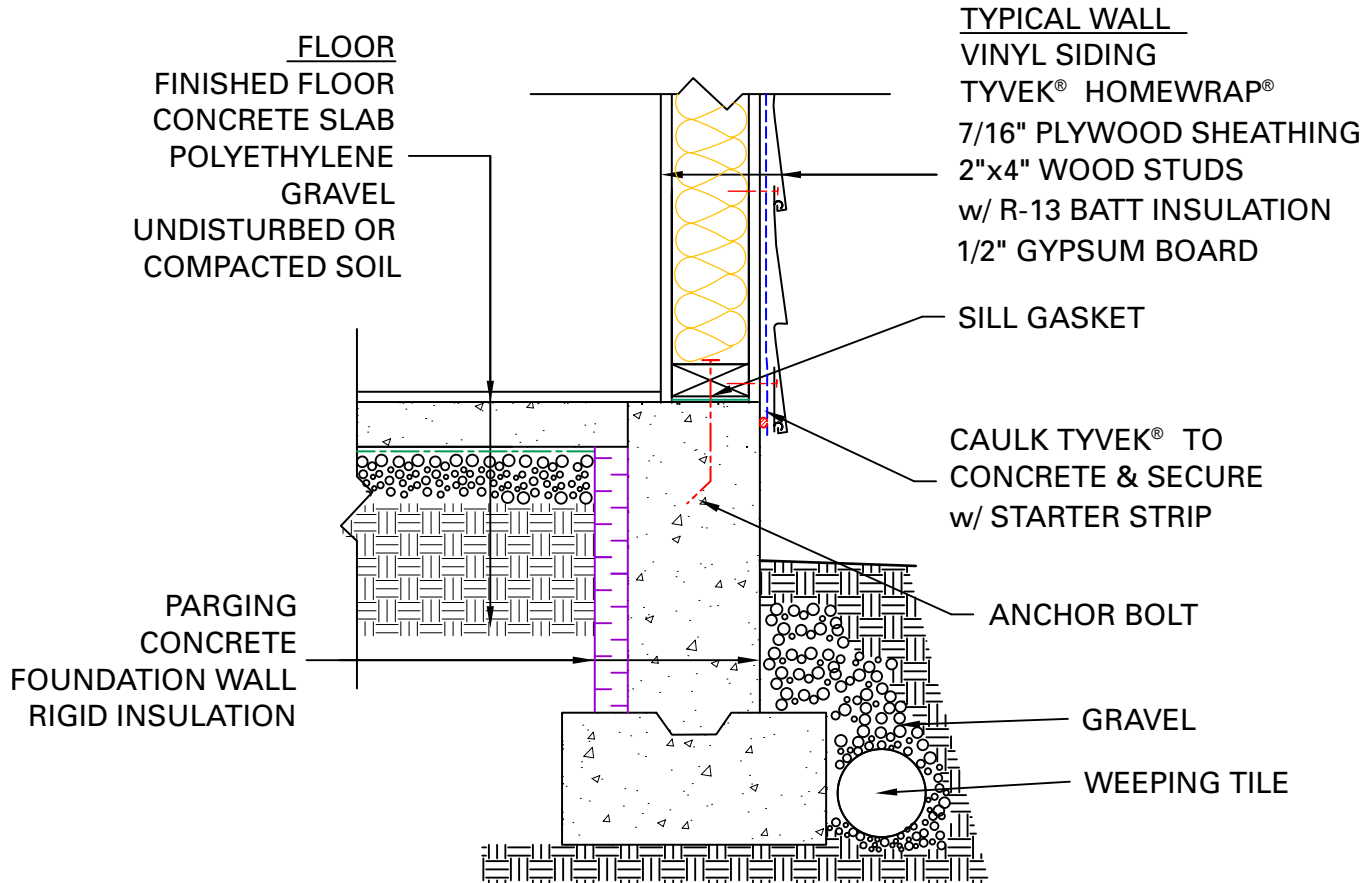
(ex. DUPONT™ CONTRACTOR TAPE).

\*FASTEN TYVEK® TO SHEATHING WITH LARGE HEAD NAILS

OR USE NAILS WITH LARGE PLASTIC WASHER HEADS. (ex. DUPONT™ WRAPCAPS)

\*LOCAL LAWS, ZONING, AND BUILDING CODES VARY AND

THEREFORE GOVERNS OVER MATERIAL SELECTION AND DETAILING SHOWN BELOW.



## BASE OF WALL DETAIL

RESIDENTIAL WOOD FRAME STRUCTURE w/ VINYL SIDING (COOLING  
CLIMATE)