

## GENERAL NOTES

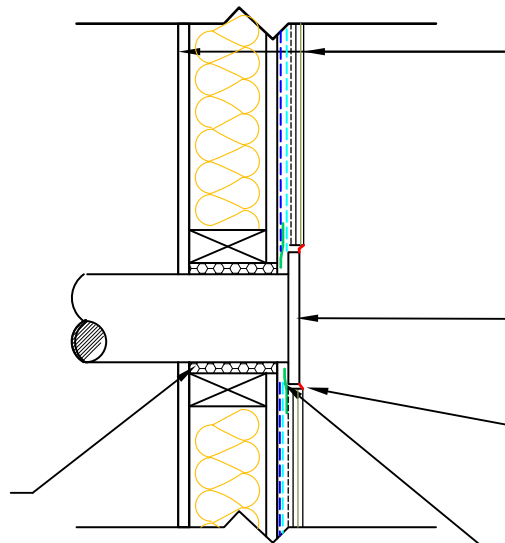
- \*SEAL ALL TYVEK® JOINTS AND PENETRATIONS WITH APPROVED TAPE. (ex. DUPONT™ CONTRACTOR TAPE)
- \*FASTEN TYVEK® TO SHEATHING WITH LARGE HEAD NAILS OR USE NAILS WITH LARGE PLASTIC WASHER HEADS. (ex. DUPONT™ WRAPCAPS)
- \*LOCAL LAWS, ZONING, AND BUILDING CODES VARY AND THEREFORE GOVERNS OVER MATERIAL SELECTION AND DETAILING SHOWN BELOW.
- \*INSTALL STUCCO ACCORDING TO MANUFACTURER'S WRITTEN INSTRUCTIONS

TYPICAL WALL  
FINISH COAT  
BROWN COAT  
SCRATCH COAT  
WIRE LATH  
WEATHER RESISTANT BARRIER  
(TYVEK® HOMEWRAP® RECOMMENDED)  
TYVEK® STUCCOWRAP®  
PLYWOOD SHEATHING  
2"x4" WOOD STUDS  
w/ R-13 BATT INSULATION  
1/2" GYPSUM BOARD

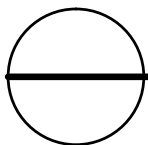
PENETRATION  
(ex. EXHAUST VENT)

CAULKING

TAPE TYVEK® AROUND  
PENETRATION (USE TYVEK® FLEXWRAP™  
FOR LARGE OPENINGS)



PROVIDE WOOD BLOCKING  
AND SEAL AROUND  
PENETRATION USING  
MINIMALLY EXPANDING  
POLYURETHANE FOAM OR  
APPROVED CAULK



## WALL PENETRATION DETAIL

RESIDENTIAL WOOD FRAME STRUCTURE w/ STUCCO (COOLING  
CLIMATE)