

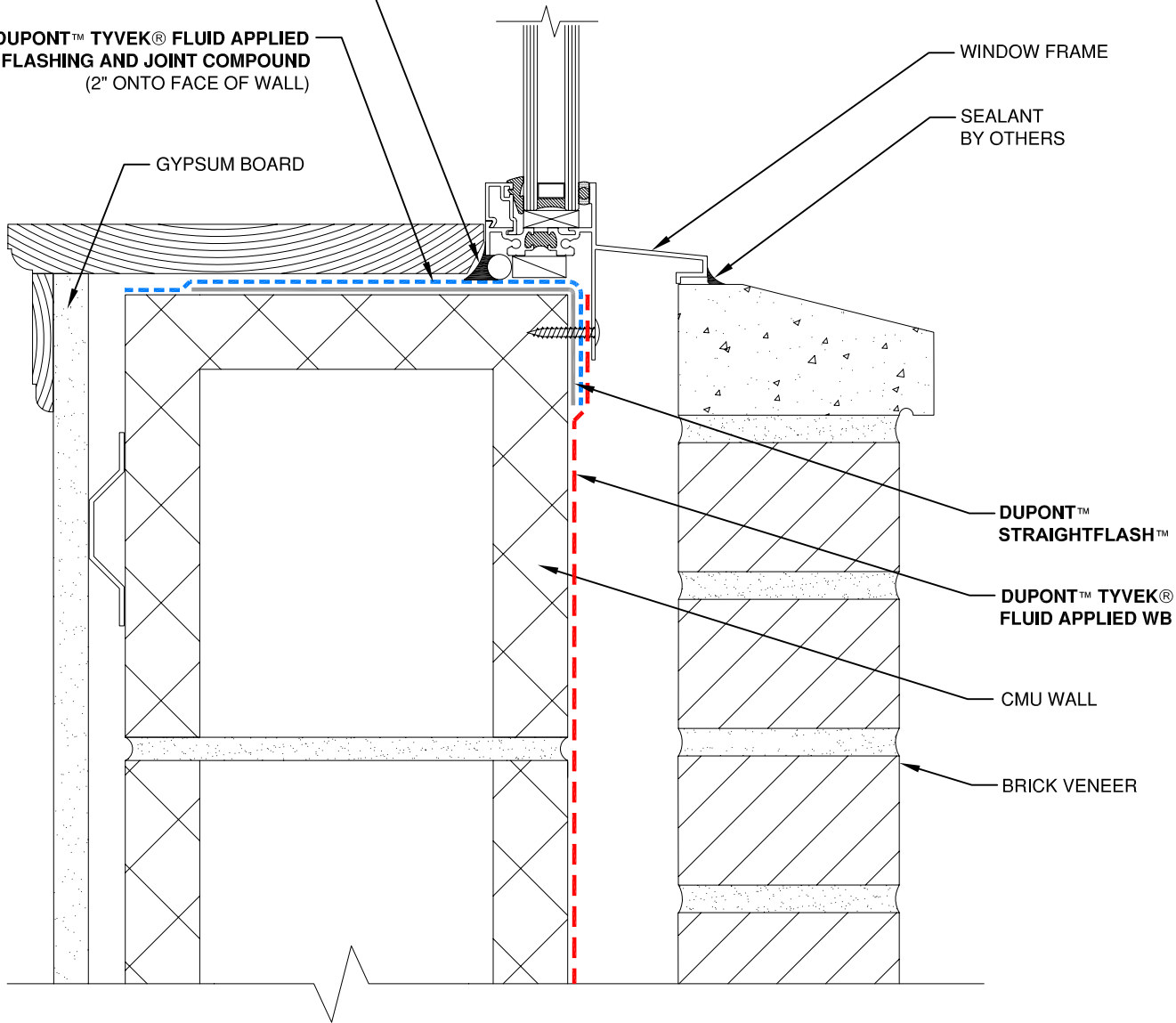
DUPONT™ SEALANT FOR TYVEK®
FLUID APPLIED SYSTEM
(USE BACKER ROD AS NECESSARY)

DUPONT™ TYVEK® FLUID APPLIED
FLASHING AND JOINT COMPOUND
(2" ONTO FACE OF WALL)

GYPSUM BOARD

WINDOW FRAME

SEALANT
BY OTHERS



DUPONT™
STRAIGHTFLASH™

DUPONT™ TYVEK®
FLUID APPLIED WB

CMU WALL

BRICK VENEER

NOTE

- 1) INTERIOR VAPOR RETARDER MAY BE REQUIRED IN SOME REGIONS.
- 2) THIS INFORMATION IS PROVIDED BY DUPONT AS REFERENCE ONLY; PLEASE CONSULT LOCAL BUILDING CODES, REGULATIONS AND LAWS TO DETERMINE THE APPROPRIATE CONSTRUCTION METHODS AND MATERIALS NEEDED.

SCALE: NOT TO SCALE

REVISION DATE: 4/28/10

DRAWING: FA-B-W102s

FLANGED WINDOW SILL - METHOD 1
BRICK VENEER / CMU WALL / FLUID APPLIED FLASHING



Tyvek.
FLUID APPLIED WB