

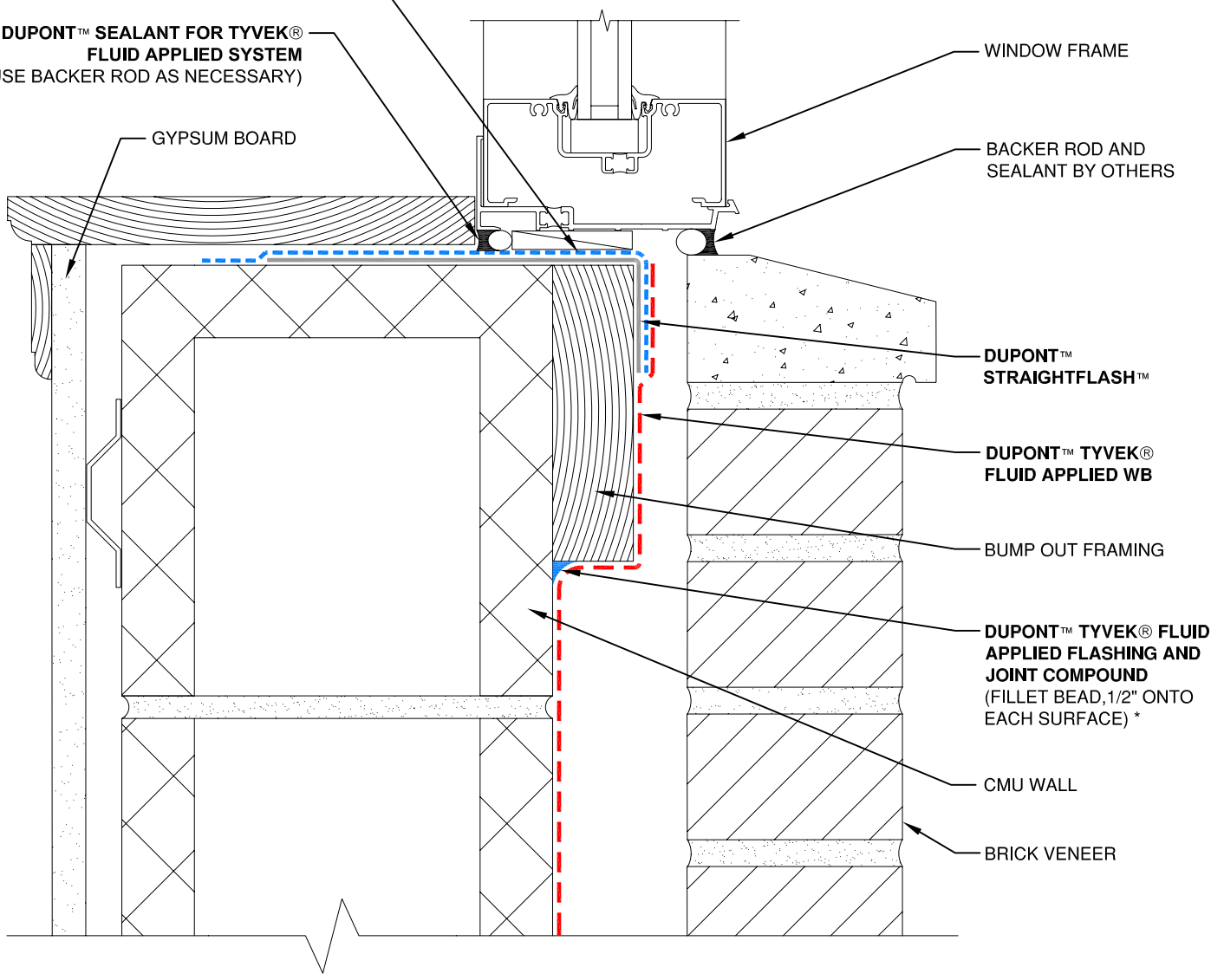
DUPONT™ TYVEK® FLUID APPLIED FLASHING AND JOINT COMPOUND
(2" ONTO FACE OF WALL)

DUPONT™ SEALANT FOR TYVEK® FLUID APPLIED SYSTEM
(USE BACKER ROD AS NECESSARY)

GYPSUM BOARD

WINDOW FRAME

BACKER ROD AND SEALANT BY OTHERS



DUPONT™ STRAIGHTFLASH™

DUPONT™ TYVEK® FLUID APPLIED WB

BUMP OUT FRAMING

DUPONT™ TYVEK® FLUID APPLIED FLASHING AND JOINT COMPOUND
(FILLET BEAD, 1/2" ONTO EACH SURFACE) *

CMU WALL

BRICK VENEER

NOTE

1) INTERIOR VAPOR RETARDER MAY BE REQUIRED IN SOME REGIONS.
2) THIS INFORMATION IS PROVIDED BY DUPONT AS REFERENCE ONLY; PLEASE CONSULT LOCAL BUILDING CODES, REGULATIONS AND LAWS TO DETERMINE THE APPROPRIATE CONSTRUCTION METHODS AND MATERIALS NEEDED.

* DUPONT™ SEALANT FOR TYVEK® FLUID APPLIED SYSTEM OR DUPONT™ TYVEK® FLUID APPLIED FLASHING AND JOINT COMPOUND MAY BE USED.



Tyvek.
FLUID APPLIED WB

SCALE: NOT TO SCALE

REVISION DATE: 4/28/10

DRAWING: FA-B-W104s

BUMP OUT WINDOW SILL - METHOD 1
BRICK VENEER / CMU WALL / FLUID APPLIED FLASHING