

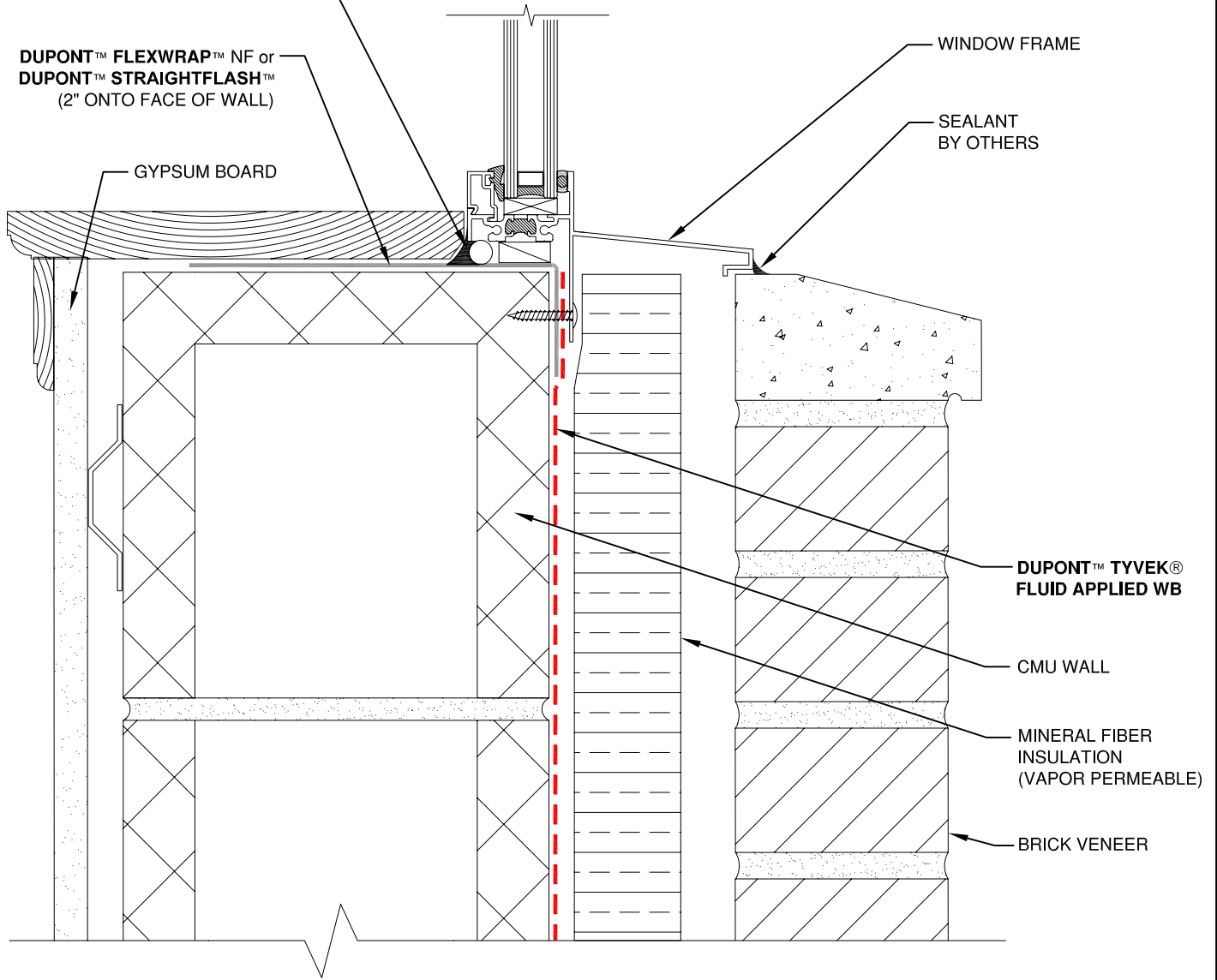
**DUPONT™ SEALANT FOR TYVEK®
FLUID APPLIED SYSTEM**
(USE BACKER ROD AS NECESSARY)

**DUPONT™ FLEXWRAP™ NF or
DUPONT™ STRAIGHTFLASH™**
(2" ONTO FACE OF WALL)

GYPSUM BOARD

WINDOW FRAME

SEALANT
BY OTHERS



NOTE

- 1) INTERIOR VAPOR RETARDER MAY BE REQUIRED IN SOME REGIONS.
- 2) THIS INFORMATION IS PROVIDED BY DUPONT AS REFERENCE ONLY; PLEASE CONSULT LOCAL BUILDING CODES, REGULATIONS AND LAWS TO DETERMINE THE APPROPRIATE CONSTRUCTION METHODS AND MATERIALS NEEDED.

SCALE: NOT TO SCALE

REVISION DATE: 4/28/10

DRAWING: FA-BX-W103s

FLANGED WINDOW SILL - METHOD 2

BRICK VENEER / EXTERIOR INSULATION / CMU WALL / SELF-ADHERED FLASHING



Tyvek.

FLUID APPLIED WB