

DUPONT™ SEALANT FOR TYVEK®  
FLUID APPLIED SYSTEM  
(USE BACKER ROD AS NECESSARY)

DUPONT™ TYVEK® FLUID APPLIED  
FLASHING AND JOINT COMPOUND  
(2" ONTO FACE OF WALL)

DUPONT™ STRAIGHTFLASH™

WINDOW FRAME

SEALANT  
BY OTHERS

GYPSUM BOARD

BATT INSULATION

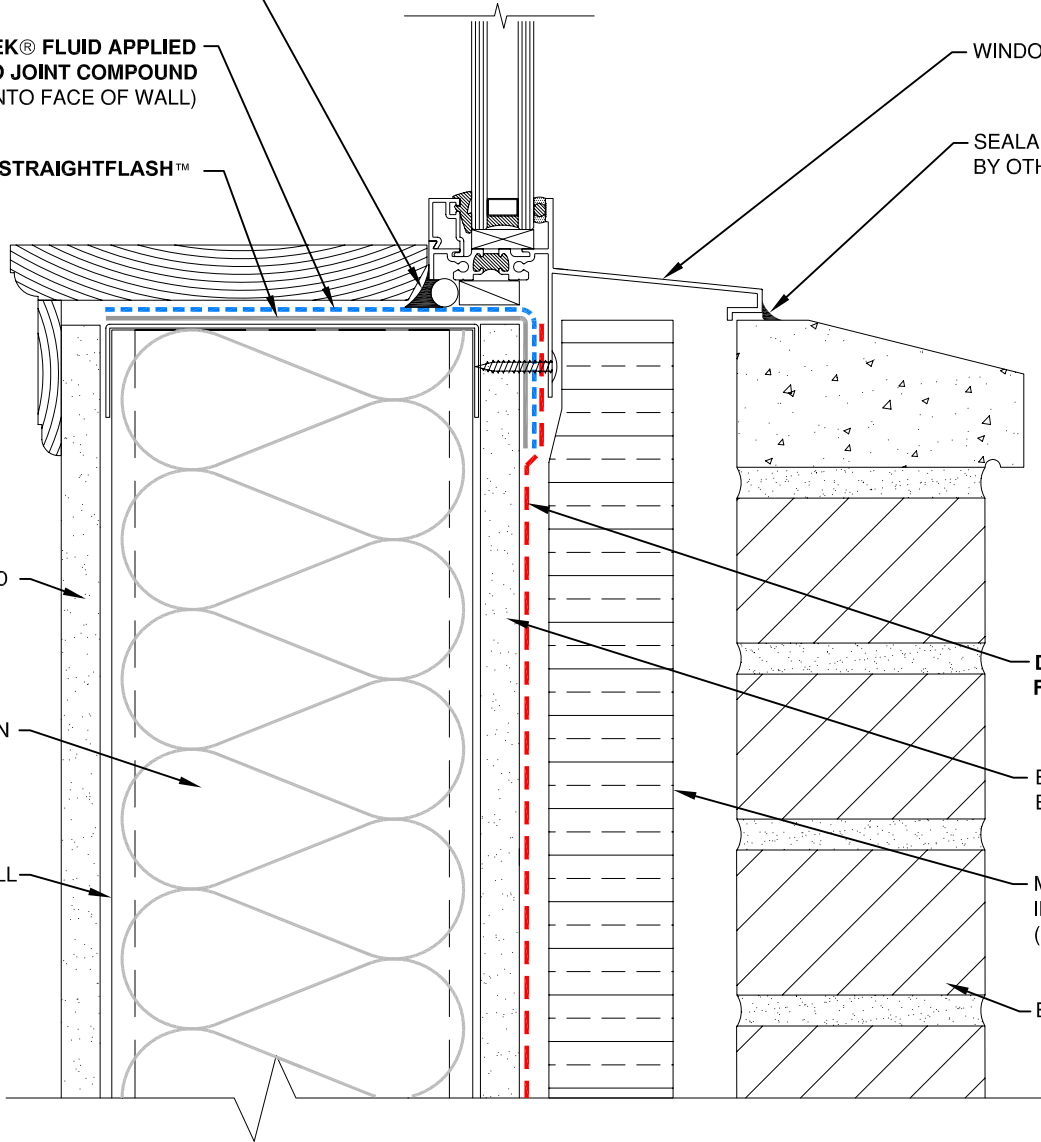
STEEL STUD WALL

DUPONT™ TYVEK®  
FLUID APPLIED WB

EXTERIOR GYPSUM  
BOARD

MINERAL FIBER  
INSULATION  
(VAPOR PERMEABLE)

BRICK VENEER



**NOTE**

- 1) INTERIOR VAPOR RETARDER MAY BE REQUIRED IN SOME REGIONS.
- 2) THIS INFORMATION IS PROVIDED BY DUPONT AS REFERENCE ONLY; PLEASE CONSULT LOCAL BUILDING CODES, REGULATIONS AND LAWS TO DETERMINE THE APPROPRIATE CONSTRUCTION METHODS AND MATERIALS NEEDED.



SCALE: NOT TO SCALE

REVISION DATE: 4/28/10

DRAWING: FA-BX-W202s

**FLANGED WINDOW SILL - METHOD 1**

BRICK VENEER / EXTERIOR INSULATION / STEEL STUD WALL / FLUID APPLIED FLASHING