

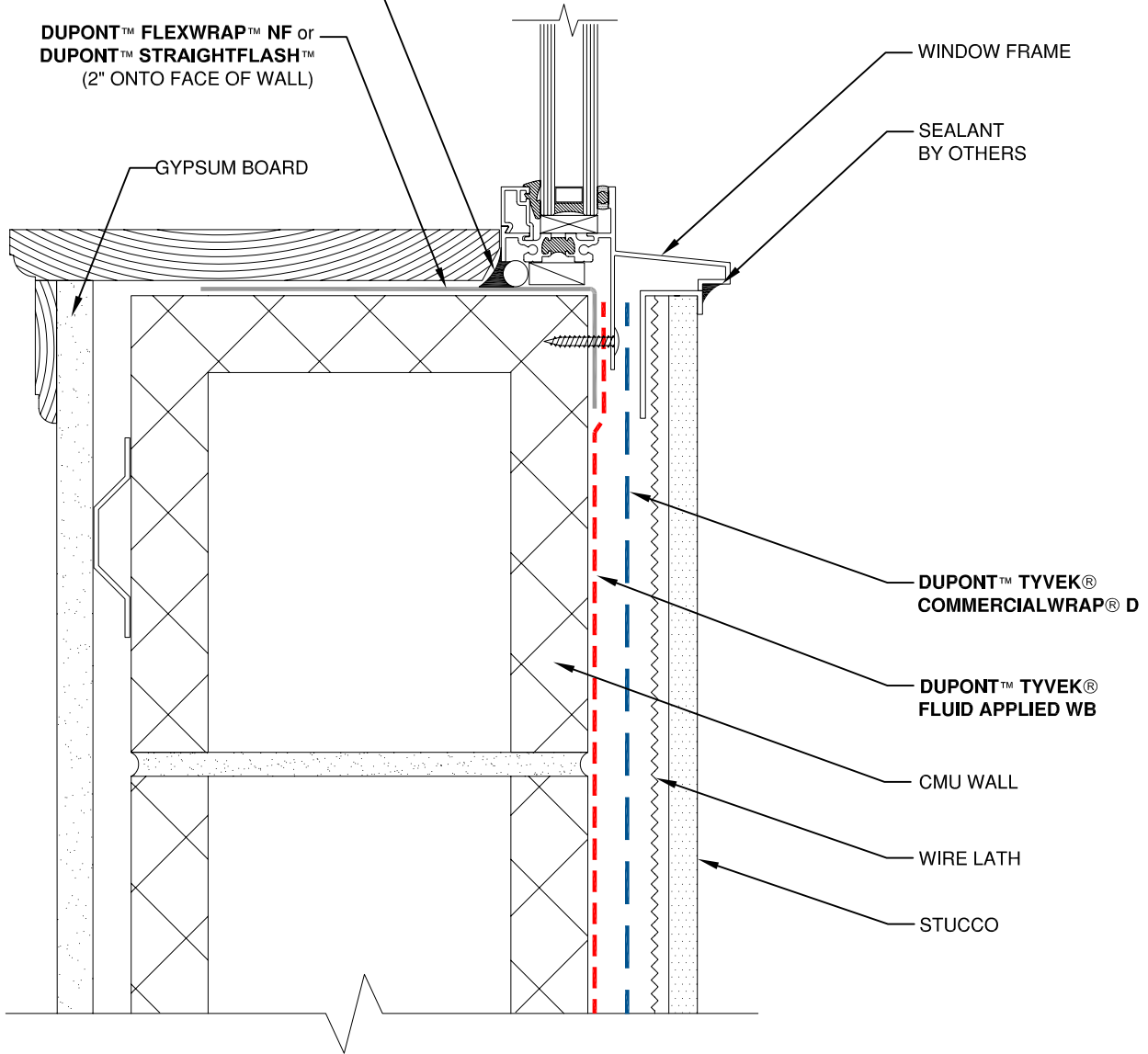
DUPONT™ SEALANT FOR TYVEK®  
 FLUID APPLIED SYSTEM  
 (USE BACKER ROD AS NECESSARY)

DUPONT™ FLEXWRAP™ NF or  
 DUPONT™ STRAIGHTFLASH™  
 (2" ONTO FACE OF WALL)

GYPSUM BOARD

WINDOW FRAME

SEALANT  
 BY OTHERS



DUPONT™ TYVEK®  
 COMMERCIALWRAP® D

DUPONT™ TYVEK®  
 FLUID APPLIED WB

CMU WALL

WIRE LATH

STUCCO

**NOTE**

- 1) INTERIOR VAPOR RETARDER MAY BE REQUIRED IN SOME REGIONS.
- 2) THIS INFORMATION IS PROVIDED BY DUPONT AS REFERENCE ONLY; PLEASE CONSULT LOCAL BUILDING CODES, REGULATIONS AND LAWS TO DETERMINE THE APPROPRIATE CONSTRUCTION METHODS AND MATERIALS NEEDED.



**Tyvek.**  
 FLUID APPLIED WB

SCALE: NOT TO SCALE

REVISION DATE: 9/14/10

DRAWING: FA-S-W103s

**FLANGED WINDOW SILL - METHOD 2**

STUCCO / CMU WALL / SELF-ADHERED FLASHING