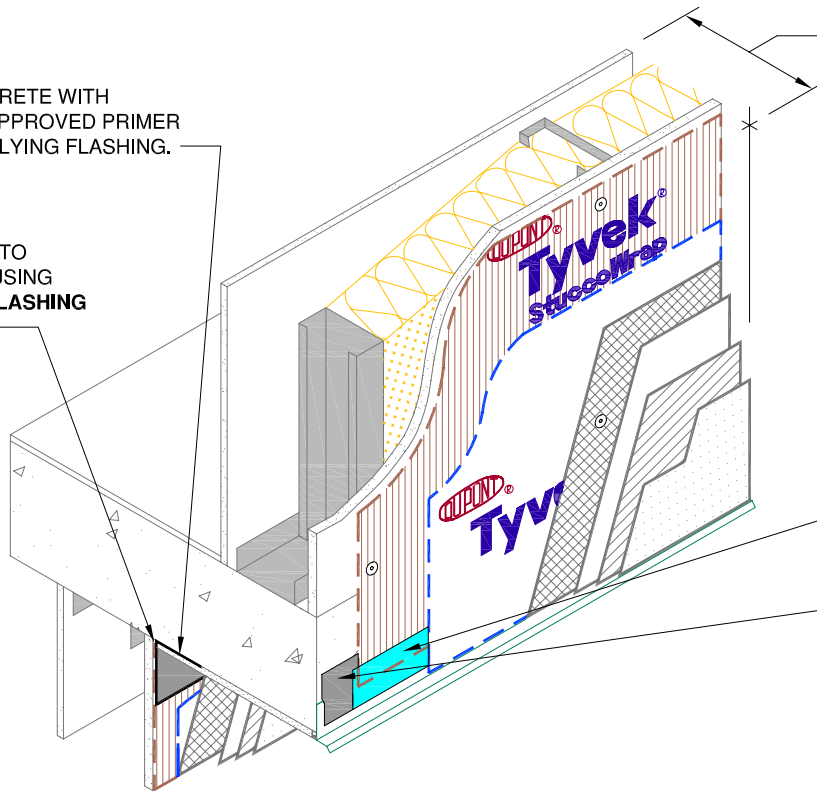


PRIME CONCRETE WITH
DUPONT™ APPROVED PRIMER
BEFORE APPLYING FLASHING.

SEAL TYVEK TO
CONCRETE USING
DUPONT™ FLASHING
PRODUCTS



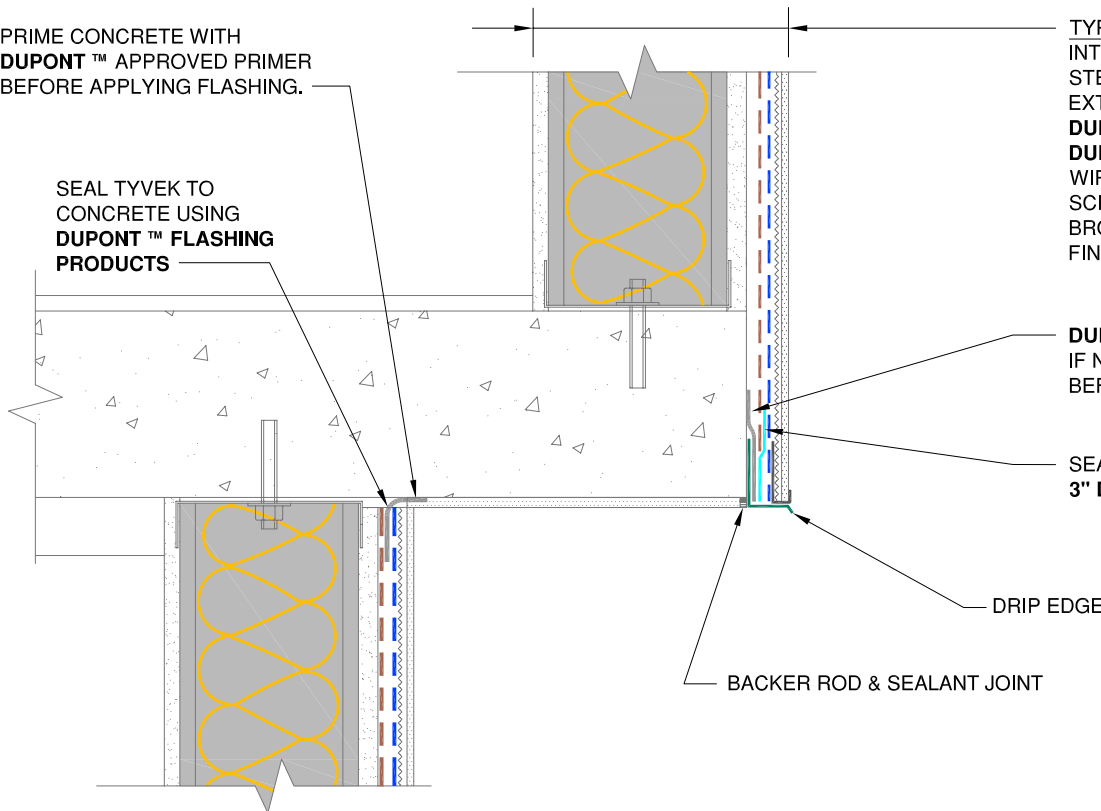
TYPICAL WALL
INTERIOR GYPSUM BOARD
STEEL STUDS W/BATT INSULATION
EXTERIOR GYPSUM BOARD
DUPONT™ TYVEK® STUCCOWRAP®
DUPONT™ TYVEK®
WIRE LATH
SCRATCH COAT
BROWN COAT
FINISH COAT

SEAL BOTTOM USING
3" DUPONT™ TYVEK® TAPE

DUPONT™ FLASHING PRODUCTS
IF NECESSARY PRIME SUBSTRATE
BEFORE APPLYING FLASHING

PRIME CONCRETE WITH
DUPONT™ APPROVED PRIMER
BEFORE APPLYING FLASHING.

SEAL TYVEK TO
CONCRETE USING
DUPONT™ FLASHING
PRODUCTS



TYPICAL WALL
INTERIOR GYPSUM BOARD
STEEL STUDS W/BATT INSULATION
EXTERIOR GYPSUM BOARD
DUPONT™ TYVEK® STUCCOWRAP®
DUPONT™ TYVEK®
WIRE LATH
SCRATCH COAT
BROWN COAT
FINISH COAT

DUPONT™ FLASHING PRODUCTS
IF NECESSARY PRIME SUBSTRATE
BEFORE APPLYING FLASHING

SEAL BOTTOM USING
3" DUPONT™ TYVEK® TAPE

DRIP EDGE

BACKER ROD & SEALANT JOINT

STUCCO - CANTILEVERED FLOOR

- SEAL ALL DUPONT™ TYVEK® SEAMS AND REPAIR MINOR HOLES WITH DUPONT™ TYVEK® TAPE.
- FASTEN DUPONT™ TYVEK® WITH APPROVED FASTENERS AND SPACING.
- INTERIOR VAPOR RETARDER MAY BE REQUIRED IN SOME REGIONS.
- LOCAL LAWS, ZONING, AND BUILDING CODES VARY AND THEREFORE GOVERN OVER MATERIAL SELECTION AND DETAILING SHOWN ABOVE.



Tyvek.