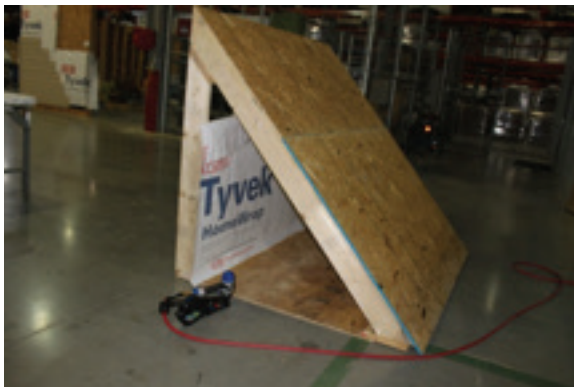


Air Barrier Installation Detail

Garage To Attic Interface

This installation bulletin is intended for use when installing **DuPont™ Tyvek® WRBs** at attic and knee wall interfaces and should be used with the *DuPont™ Tyvek® Water-Resistive and Air Barriers Installation Guidelines For Buildings Less Than 5 Stories and Low-Rise Multi-Family Residential Buildings Less Than 6 Stories*. All installation requirements, including air barrier specific requirements from the Installation Guidelines must be followed.



1. Working on the attic side of the knee wall, apply **DuPont™ Residential Sealant**, or recommended sealant, along the bottom plate and up the first and last studs approximately 12" from the top of the knee wall. (For ease of handling, it may be helpful to add a sealant bead on every other stud.) Starting at the bottom of the wall, install the first layer of the **Tyvek® WRB** by pressing it into the sealant using firm hand pressure or a J-roller. This will secure the **Tyvek® WRB** in preparation for Step 2.
2. Apply **DuPont™ Residential Sealant**, or recommended sealant, along the top plate and to the remaining 12" of the first and last studs. Install the second layer of the **Tyvek® WRB** with proper overlap onto the first layer by pressing it into the sealant using firm hand pressure or a J-roller to ensure a good bond between the **Tyvek® WRB** and the framing.



3. Fasten the **DuPont™ Tyvek® WRB** to the studs as instructed in the *DuPont™ Tyvek® Water-Resistive and Air Barriers Installation Guidelines For Buildings Less Than 5 Stories and Low-Rise Multi-Family Residential Buildings Less Than 6 Stories*.



4. Cut ½" expanded polystyrene or equivalent foam blocking to fit openings at rafters and install.



5. Use **DuPont™ Window & Door Foam** to complete seal around foam blocking.

NOTE: Some architectural details (penetrations, stud supports, ventilation pass through, etc. may require supplemental blocking with air barriers (foam, OSB, etc.).

Key Considerations

- Use > 1/4 inch bead of **DuPont™ Residential Sealant**.
- Use J-Roller or firm hand pressure over sealant interface to improve bond between **Tyvek® WRB** and wood framing.
- Check with sealant manufacturer to ensure compatibility with both substrate and **Tyvek® WRB**.
- Follow *DuPont™ Tyvek® Water-Resistive and Air Barriers Installation Guidelines For Buildings Less Than 5 Stories and Low-Rise Multi-Family Residential Buildings Less Than 6 Stories*, including, but not limited to:
 - Proper overlap of the **Tyvek® WRB**.
 - Proper installation and spacing of fasteners.
 - Proper sealing of all **Tyvek® WRB** seams using **DuPont™ Tyvek® Tape**. Use 3" **Tyvek® Tape** for both vertical and horizontal seams of **DuPont™ Tyvek® StuccoWrap®** and **DuPont™ Tyvek® DrainWrap™**.
 - Repair any areas of damage to the **Tyvek® WRB**.
 - Proper sealing of all penetrations made to the **Tyvek® WRB**.



For more information about DuPont Performance Building Solutions, please call 1-800-448-9835 or visit us at building.dupont.com